

ARRIVAL: SUVARNBHUMI BANGKOK INTERNATIONAL AIRPORT

Procedures for International Arrival ARRIVAL ON 2ND FLOOR

Documents to be shown : Passport, Immigration Card (TM 6)



STEP 1:
Disembark from the aircraft



STEP 4:
Pass Through customs
check-point



STEP 2:
Show passport and Immigration
Card TM6 at the Immigration
Control Counter



STEP 5:
Move to Arrival Hall 2nd Floor



STEP 3:
Wait for luggage,
at Baggage Claim

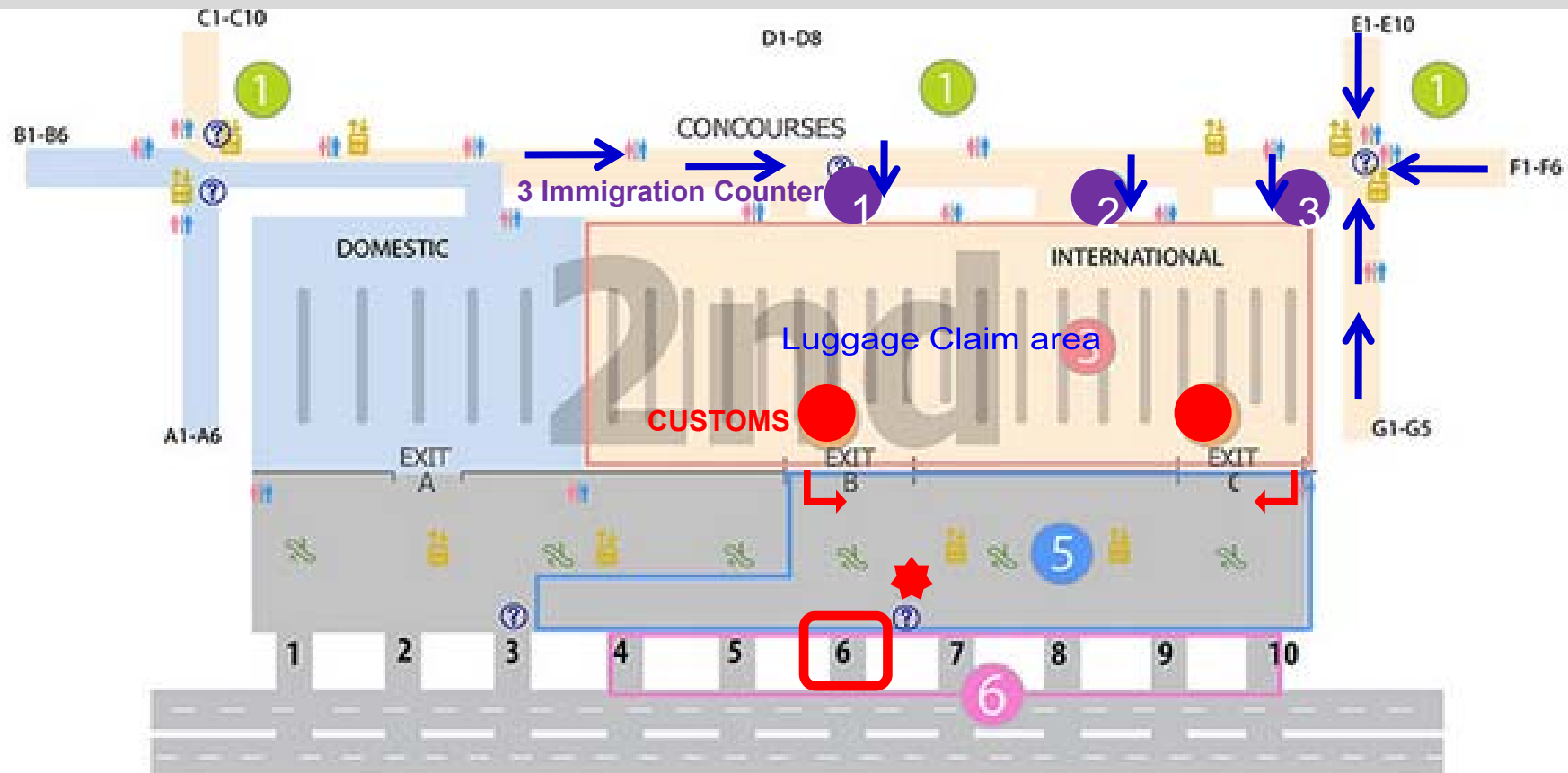
STEP 6:
Please see **ARRIVAL INSTRUCTION ON THE
NEXT PAGE**

VISA TO ENTER TO THAILAND:

Please link into this web link that are shown the VISA type for entry to Thailand: <http://www.thailaws.org/visa-on-arrival-in-thailand/>

ARRIVAL: SUVARNBHUMI BANGKOK INTERNATIONAL AIRPORT

FLOOR PLAN: ARRIVAL IS ON 2ND FLOOR



EXIT FROM DOOR B or C: International Arrival; once you have passed IMMIGRATION, LUGGAGE CLAIM AND CUSTOM, please look for our staff **AT MEETING POINT GATE #6**. Our staff will hold the signage under **YOUR EVENT NAME**.

GUIDE - TBA

EMERGENCY PLEASE CONTACT:
MICE Indeed Co., Ltd.
Rossana + 66 90 919 5622

MICE
Indeed