



International Family
Therapy Association

IFTA World Therapy Congress

Aberdeen, Scotland

March 28 – 30, 2019



VisitAberdeenshire

Welcome to the IFTA Congress

Dear Colleagues,

Welcome to Aberdeen Scotland! This is the International Family Therapy Association's 2019 World Family Therapy Congress.

This is another of those rare and wonderful opportunities in which we can renew ourselves and enrich our practice skills in family therapy. The goal for the congress, in a larger sense, is the same as it has been since IFTA was founded in 1987: Advancing family therapy worldwide by promoting research, education, sound practice, and promoting international cooperation. We hope that this Congress facilitates an exchange of knowledge and ideas that support the health and well-being of families and other human systems. The Congress provides magnificent opportunities for face-to-face sharing of ideas and networking with colleagues from various parts of the globe. The 2019 Congress Committee invites family therapists to explore both new and familiar ways to assist families.

We live simultaneously in "one world" and many worlds. Thus, family therapy is a mutual, interactive process in which we learn new ways from colleagues from many lands. Communicating and networking among over 350 therapists from over 35 countries during this congress will provide professional contacts and information to support the exchange of knowledge and the growth of family therapy in many countries.

We hope you will share and learn about dealing with old, familiar problems and new, unfamiliar challenges we may not have faced previously.

Warwick Phipps

Warwick Phipps, Ph.D.

President

What is IFTA?

IFTA is the professional association for those interested in the field of marriage and family therapy throughout the world. As such, it is the only organization that provides unity for therapists from east to west, respecting traditional approaches and embracing the tradition of tomorrow.

Conference Code of Conduct

World Family Therapy Congresses are a unique meeting place for the world-wide family of family therapists. The Congress Board desires that the experience of this congress be one of the highlights of your year.

As we look forward to another exciting congress, we want to remind everyone that the World Family Therapy Congress is dedicated to providing a harassment-free experience for everyone, regardless of factors such as sex, gender, gender identity and expression, sexual orientation, ability, physical appearance, body size, race, ethnicity, nationality, culture, or religion.

Harassment may take a variety of forms and in a variety of environments, including in-person or online. Attendees asked to stop any harassing behavior are expected to comply immediately. If a participant engages in harassing behavior, the congress organizers may take any action they deem appropriate, from warning the offender to expulsion from the congress. If you are being harassed or notice that someone else is being harassed, please contact a member of conference staff immediately. Their names and pictures are listed in the Congress Program.

Congress staff will be happy to help participants contact hotel/venue security or local law enforcement, provide escorts, or otherwise assist those experiencing harassment to feel safe for the duration of the conference. We value you, your safety and your attendance.

We expect all conference participants to be professional, considerate, respectful and collaborative. Please silence mobile devices during presentations, do not interrupt others who are speaking, and avoid using shared wifi/bandwidth to download large files. **DO NOT RECORD ANY LIVE DEMONSTRATION THERAPY WORKSHOPS.**

We appreciate your help in making the World Family Therapy Congress among very best it can be.

Mission Statement

Adopted December 2005

The cornerstone of every society is the family. With the support of its members, the International Family Therapy Association (IFTA) provides international conferences to promote, strengthen and improve the quality of family therapy, the quality of relationships within families and to promote well being and peace within our world.

IFTA, working in a collaborative spirit with other professionals and organizations around the world who share its mission, also promotes continuing education for family therapy professionals in the development of international quality standards for marriage and family therapists in order that they may better assist families in the communities in which they serve.

IFTA: Celebrating 30+ Years

The International Family Therapy Association was an outgrowth of the East-West Bridging Congress conducted in Prague in 1987 with Virginia Satir and Donald Bloch as the Honorary Vice Presidents. After two years of organizational work including creating a Founding Board of Directors, with Virginia Satir on the Founding Board, IFTA launched its first World Family Therapy Congress in Dublin, Ireland, 1989.

Thank You to the Following Organizations Who are Co-Sponsoring the Coffee Breaks:

Satir Institute of the Pacific
International Accreditation Commission for Systemic Therapy Education

Plenary Speakers

Monica McGoldrick



Transforming Life Narratives: Context, Connection, Genograms, Legacies and Having A Sense Of Home

This presentation will be about the key dimensions for assessing human problems and evolving healing solutions. Genograms are the core mapping tool of this work. A genogram is a map of who you belong to. This presentation will focus on viewing each person in the context of his or her cultural background, social class, gender and sexual orientation, family history, life cycle trajectory, and multiple identities in terms of interests, affiliations, and values.

Monica McGoldrick, MSW, PhD (h.c.), Director of the Multicultural Family Institute Teacher, author and family therapist. She has an international reputation as a trainer and author. She is on the Clinical Faculty of the Psychiatry Department of the Rutgers Robert Wood Johnson Medical School. Her books include *Ethnicity and Family Therapy* (3rd ed), *The Expanded Family Life Cycle* (5th ed. 2017), *Genograms* (3rd ed), *Living Beyond Loss* (2nd ed), *Re-Visioning Family Therapy: Race, Culture and Gender in Clinical Practice* (2nd ed), *Women in Families*, and *The Genogram Journey: Reconnecting with Your Family* (2nd ed of *You Can Go Home Again*, 2011). Her newest book the *Genogram Casebook* was published by W.W. Norton in 2016. She is also the author of a number of clinical videos available through www.psychotherapy.net

Imelda McCarthy



Co-Creating Fifth Provinces or Islands of Support in These Times of Social Crises

We are at a time of social, financial and ecological mis-alignment at this point in our experiences of living on our planet. From her own experience, Imelda, over the years, has come to appreciate and know the importance of solidarity and communities of support (Fifth Provinces) professionally and personally. When we were building the field of family therapy this was true and it is more so called for at this time of contraction (of money services, treatment possibilities, etc.) and rising inequalities. She will also talk about the importance of systemic reflexivity in coming to know, 'who we choose to be and what we stand for' together with the consequences of our (inter-)actions for our own and our client's contexts and ecologies. She will also suggest that meditation practices can play a big role in helping us to achieve equanimity in our lives and work.

Imelda McCarthy PhD has been a family therapist, supervisor, writer and international presenter for almost forty years. Her writings have been translated into nine languages and cover the areas of sexualised abuse, poverty, gender and spirituality. In addition to developing the 'Fifth Province Approach' with Nollaig Byrne and Philip Kearney, she has also spent over 25 years as an academic in the Social Sciences. Now, she works as a therapist and supervisor from her home under the rubric of, 'The Fifth Province Centre' where she also facilitates meditation groups (Fifth Province Sangha). For the past number of years she has been facilitating one and two-day retreats for those interested in meditation and consciousness evolution. Throughout her practices with meditation she has integrated her systemic and spiritual experiences together with training alongside her teacher, Sri Vasudeva.

Program at a Glance

Wednesday March 27, 2019

14:00 - 17:00 Registration for Congress

Thursday March 28, 2018

07:00-17:30 Registration Hours
 08:30-09:15 Presentations/Workshops
 09:30-10:15 Presentations/Workshops
 10:15-10:45 Refreshment Break
 10:45-11:30 Presentations/workshops
 11:30-13:30 Welcome Lunch

Master of Ceremonies: John Lawless, Program Chair
Welcome to Scotland: Sarah Eldrid, Samantha Petrie and Roy Farquharson, The UK Association of Family Therapy, Scottish Branch
Welcome: Warwick Phipps, IFTA Presiden
Announcements: Doug Tschopp, Congress Manager

13:30-14:15 Presentations/Workshops
 14:30-15:15 Presentations/Workshops
 15:15-15:45 Refreshment Break
 15:45-16:30 Presentations/Workshops
 16:45-17:30 Presentations/Workshops
 17:45-18:30 Presentations/Workshops

Friday March 29, 2019

08:00-17:30 Registration Hours
 08:30-09:15 Presentations/Workshops
 09:30-10:15 Presentations/Workshops
 10:15-10:45 Refreshment Break
 10:45-12:00 Plenary Address: The Family Process Institute Distinguished Lecture

Master of Ceremonies: John Lawless, Program Chair
Welcome to the Congress: Warwick Phipps, IFTA President
Introduction of Monica McGoldrick M.S.W., Ph.D. (h.c.), John Lawless, Program Chair
Transforming Life Narratives: Context, Connection, Genograms, Legacies and Having A Sense Of Home
 Monica McGoldrick

12:00-13:30 Conference Lunch

Announcements: Doug Tschopp, Congress Manager

13:00-14:15 Poster Session
 14:30-15:15 Presentations/Workshops
 15:30-16:15 Presentations/Workshops
 16:15-16:45 Presentations/Workshops
 16:45-18:00 Plenary Address:

Master of Ceremonies: John Lawless, Program Chair
Introduction of Imelda McCarthy, Ph.D
 John Lawless, Program Chair
Co-Creating Fifth Provinces or Islands of Support in These Times of Social Crises
 Imelda McCarthy

19:00 - 21:00 Film Festival Scholarship Fund Raiser

A film festival A "live" look at the birth of Systemic Family Therapy: A festival featuring "live" examples taken directly from the Don D. Jackson Archive Collections

COST: Professionals, \$10 ----- Students, \$2

Located in the Fleming Auditorium

Saturday March 30, 2019

08:00-14:00 Registration Hours
 08:30-09:15 Presentations/Workshops
 09:30-10:15 Presentations/Workshops
 10:15-10:45 Refreshment Break
 10:45-11:30 Presentations/Workshops
 11:45-13:00 Closing Lunch

Master of Ceremonies: John Lawless, Program Chair
Welcome to Basel March 12 - 14, 2020,
 Warwick Phipps, President

13:00-13:45 Presentations/Workshops
 14:00-14:45 Presentations/Workshops
 15:00-16:00 Closing Refreshment Break
 16:00 Closing Reception

Supervision Track

Thursday, March 28, 2019

The Supervision Track in the 2019 World Family Therapy Congress is designed to meet the workshop requirements for those seeking to accrue the hours for the Certified Systemic Supervisor (CSS) credential. These seven workshops on Thursday are all eligible for use in pursuing the academic requirements of the CSS certification.

****Pre-Registration is required to attend these sessions****

08:30 - 09:15

Practice Settings and Contexts of Systemic Clinical Supervision Practice

© William Northey - USA

In this workshop participants will consider competence development from a number of perspectives as well as the role and style of systemic supervisors. Participants will also reflect on the systemic interplay between supervisor, supervisee, clients, and the clinical context and examine the Condensed Marriage and Family Therapy Core Competencies.

Crombie A Suite

45 min

09:30 - 10:15

The "Nuts and Bolts" of Clinical Supervision

© Jay Burke - USA
Katheryn Whittaker - Cayman Islands

Clinical supervision is essential to the development of competent marriage and family therapists. This presentation will discuss the logistical "nuts and bolts" of the supervision process, including contracting, resources, necessary technologies, format, roles, and establishing expectations.

Crombie A Suite

45 min

10:45 - 11:30

Connecting from a Distance: Nuts and Bolts of Online Supervision

© Yulia Watters - USA

Online based supervision continues to raise questions among practitioners and scholars (Twist, Hertlein, & Hider, 2016). Using the materials from recently conducted qualitative studies, as well as specific examples from the online based supervision practice, the presenter will engage participants in a reflection on best practices in online supervision.

Crombie A Suite

45 min

13:30 - 14:30

Evidence-Based Clinical Supervision

© Thomas Sexton - USA
Astrid Van Dam - USA

Current advancements in technology are providing unique opportunity to bring evidence to the process of clinical supervision to improve clinical outcomes and therapist competence. Evidence based supervision allows the voice of the client to be included not just in overarching case plans but in session by session decisions.

Crombie A Suite

45 min

14:30 - 15:15

Creative Techniques in Supervision

© Martin Gill - United Kingdom
Hannah Sherbersky - United Kingdom

From the collaborative perspectives of systemic and psychodramatic psychotherapy, this workshop presents key example of supervisory action methods and draws on theoretical material from contemporary schools of training. Supervisors will be invited to explore the application of these models to their existing work context.

Crombie A Suite

45 min

15:45 - 16:30

Using the Person of the Therapist Training (POTT) Model in Supervision

© Alba Nino - USA
Senem Zeytinoglu Saydam - Turkey

In this presentation, we will discuss how the Person of the Therapist Training (POTT) model can be used in supervision. We will describe POTT's premises, and present tools and assignments supervisors can use to help supervisees increase self-awareness, and use the richness of their personal experience in their clinical work.

Crombie A Suite

45 min

16:45 - 18:30

Supervising Across the Professional Life Span

© William Northey - USA
Mark Rivett - United Kingdom

Exploration of the different styles, focus, and methods needed to supervise across the professional life cycle concentrating on approaches to supervising newly qualified family therapists and experienced clinicians who may pose new challenges in supervision. Exploration of the processes that that occur in these different stages will be explored.

Crombie A Suite

45 min

© These presentations have been CE approved

Wednesday, March 27, 2019

14:00 - 17:00 Registration for Congress

Thursday, March 28, 2019

07:00-17:30 Registration for Congress

08:30-09:15 Workshops (45 min.) and Consecutive Brief Section (20 min.)

| | | |
|---|--|-----------------|
| Oh My Goodness! How Did I Get Here...Again? Decreasing Recidivism in Patients with Schizophrenia | | Room 1 |
| ☉ Christine Donalds-Rose - USA Noel Rose - USA | Recidivism in patients with schizophrenia breaks the hearts of those who love them. Presenters will share their personal experience with participants to show how collaborative care between patient's support systems and clinical support systems can greatly enhance life-long adherence to wellness thereby decreasing future relapses of loved ones. | 45 min |
| Youth at Risk: Why Families Matter | | Room 3/4 |
| ☉ Judith Landau - USA | Youth experience major behavioral health challenges. Attachment to family and culture of origin correlate with reduced risk-taking behaviors, stress, and trauma. Evidence-Based Transitional Family Therapy studies, clinical vignettes and practical techniques will illustrate the benefits of building positive attachment by targeting individuals, families and communities as the focus of change. | 45 min |
| Cross Cultural Kids and The "Forgotten Minority": Implications for the Family Therapist | | Room 5 |
| ☉ Lucinda West - USA | This presentation will increase awareness of Cross Cultural Kids (CCKs), and more specifically Third Culture Kids (TCKs). With an increasingly mobile world, the number of TCKs is growing. When TCK families move back to their home country they may attend counseling, so it is important to understand their special needs. | 45 min |
| Parental-Growth and its Clinical Implications for Family Therapists: A Mixed-Methods Study | | Room 9 |
| ☉ Sebastian Perumbilly - USA William Boylin - USA | "Parental-growth" is a clinically significant topic for psychotherapists. Most of the parenting literature focuses on behavioral outcome on children. Using a mixed-methods design, this research-study examines key-components of parental-growth from the perspectives of parents from the United States (n=214); and discusses its clinical implications for couple and family therapists. | 45 min |
| A Spirituality Of Presence Helping Clients Find Meaning And Purpose Through Loss And Trauma | | Room 10 |
| ☉ Geraldine Kerr - USA | Presence has been described as one the most therapeutic gifts a therapist can provide for a client (Geller & Greenberg, 2012). Presence, an emptying out and bracketing of self (Clarkson, 1997) represents specific steps. Therapist presence mirrors divine Presence, moving beyond loss to find meaning and purpose (Walters, 2001). | 45 min |
| Solution-Focused Time Travel | | Room 8 |
| ☉ Alexey Mikhalsky - Russian Federation | We present a therapeutic technique for working with life events in a solution-focused way, applying to marital and couples therapy. The discussed method can be classified as an integrative therapeutic approach based on postmodernist and constructivist methodology as well as on the previous findings in Russian psychology and consulting practice. | 20 min |
| An Exploratory Study On The Sexuality Establishment Of Female Studying In Religious Uni-Sex School And The Resultant Implication For Sexuality Education | | Room 8 |
| ☉ Ka Yan Karen Chan- Hong Kong | Exploration on how experiences of receiving education in religious uni-sex school help shape the views of sexuality among the women was conducted. The resultant impact correlates positively with the interviewees' acceptance of the unitary concept towards sex instilled by school and possible implication for future sexuality education had been mentioned. | 20 min |
| 09:30-10:15 Workshops (45 min.) and Consecutive Brief Section (20 min.) | | |
| Treating Children's Trauma Using EMDR in a Family Context | | Room 1 |
| ☉ Marshall Lyles - USA | Eye Movement Desensitization and Reprocessing (EMDR) has become a mainstay in the treatment of trauma. This workshop will aid participants in understanding how EMDR can be integrated with family-based play and expressive arts therapy when working with children and families affected by trauma. | 45 min |
| Practicing What We Preach: The Systemic Impact and Ethics of Therapist Self-care | | Room 2 |
| ☉ Kevin C. Garrett - USA | Family Therapists (FTs; clinicians, educators, and supervisors) often talk with clients, students, and supervisees about the importance of self-care. So, why do FTs continue to struggle with personal self-care? Participants will learn about and discuss barriers to self-care, dangers of not practicing self-care, self-care resources, and plan customized self-care regimens. | 45 min |
| Seeing Through a Systems Lens Clearly | | Room 3/4 |
| ☉ Martha Laughlin - USA Kate Warner - USA | Learning to do systemically informed therapy that is guided by systemic theory but is not restricted by a model that requires "seeing" in a particular way can be difficult and confusing. This presentation offers a clear and concise relational orientation that provides an easy framework for working with clients. | 45 min |
| A Multi-generational Approach to Treatment for Adolescent and Young Adult Substance Use | | Room 5 |
| ☉ Gale Saler - USA | Adolescent/young adult substance abusers present unique challenges. This workshop will provide an overview of challenges, importance of early intervention, parenting pitfalls, honoring independence/maintaining boundaries, etc. Presentation uses Evidence-Based, Best Practice ARISE® Comprehensive Care with Intervention as a vehicle for professionals to adapt their approach to meet family system needs. | 45 min |

| | | |
|---|---|------------------------|
| Innovations In The Delivery Of Culturally Informed Family Therapy Within The Public Health System | | Room 10 |
| ☉ Maite Mena - USA | This presentation includes: 1) the rationale for the treatment we developed - Culturally Informed and Flexible Family Based Treatment for Adolescents, 2) two innovations (adaptive manualized treatment and integration of technology) to assist with intervention delivery, and 3) data on the efficacy of the intervention with Hispanic/Latino adolescents and families. | 45 min |
| Genealogy and Identity in the Central American and Caribbean Diaspora | | Room 7 |
| ☉ Mirna Carranza - Canada | A part of the SSHRC funded project "Rights for Children and Youth: Strengthening Collaboration in the Americas", this presentation speaks to how young people are responding to the challenges of bi-cultural identities in contemporary times. It interrogates current understandings of family in the transnational economy and modalities of clinical intervention. | 20 min |
| An Intervention for Young Mothers and Their Children Experiencing Homelessness | | Room 8 |
| ☉ Natasha Slesnick - USA | Mothers experiencing homelessness with young children in their care not only contend with homelessness, substance use, victimization and mental health struggles, but also must meet the multiple and varied needs of their children. This study examined mother and child outcomes associated with an intervention integrating housing and supportive services. | 20 min |
| The Subjective Experiences of First-Time Chinese Parents' Transition to Parenthood | | Room 8 |
| ☉ Amy Wan - Hong Kong | This qualitative study examines the subjective experiences of first-time Chinese parents across their transition to parenthood, the causes of conflicts and their needs through in-depth interviews. Results indicated a need for education and counselling for the couples with regards to the impact of having a child on their marital relationship. | 20 min |
| 10:15-10:45 | Refreshment Break | |
| 10:45-11:30 | Workshops (45 min.) and Consecutive Brief Section (20 min.) | |
| Talking across borders: the UK Association for Family Therapy and Systemic Practice (AFT) | | Crombie B Suite |
| ☉ Shan Tate - United Kingdom | Family and systemic psychotherapists from key organisational roles in the UK will share and reflect on the development of family therapy in the UK, including an overview of training, registration, publications and creative practice. Delegates are invited to join in discussion, ask questions and issue challenges. | 45 min |
| Songs in Therapy – Not Only for Music Therapists: Neuroscience, Music & Family Therapy | | Room 1 |
| ☉ Beth Nemes - Israel | Childhood songs enable clients to tap into unconscious memories, activating the body memory. Musical neuroceptions raise awareness to childhood yearnings and habitual survival stances. This holds new opportunities to appreciate and respect childhood experiences and resources, and recruit internal resources to promote personal growth, congruence and changes in present life. | 45 min |
| Eight Criteria for Quality in Systemic Practitioner Research | | Room 2 |
| ☉ Gail Simon - United Kingdom | These criteria offer a framework for demonstrating quality in systemic practice research based on post-positivist qualitative methodology. The eight criteria integrate systemic practice theory, activity and values. Distinctions are made between practitioner research and research about practice. | 45 min |
| Gray Divorce: Splitting Up Later In Life | | Room 3/4 |
| ☉ Linda Hershman - USA | While divorce rates in many countries have leveled out or declined since the 1990s, one demographic is experiencing a surge in divorces. Known as "gray divorce," couples aged 50 and older are choosing to dissolve decades-long unions. This presentation will explore unique reasons for and challenges of late-life divorce. | 45 min |
| Art-Based Genograms in Family Therapy: Sharing Family Stories, Finding Places for Change | | Room 5 |
| ☉ Deborah Schroder - USA | This workshop will explore the deeply meaningful use of Art-Based Genograms in family therapy. Together we will create art-based genograms and experience the depth of meaning present in symbols and metaphor. Intergenerational beliefs, and ancestral strengths and challenges, are visible as the traditional genogram squares and circles become images. | 45 min |
| What You See is Not What it is: Functional Dialectic System Approach | | Room 9 |
| ☉ Moshe Almagor Tikotzki - Israel | The FDS approach is a short - term -focused therapy The approach is based on three suppositions: A. Behavior is goal-directed and functional. The goal is satisfaction of basic needs provided by the system. Meaning of behavior is best elucidated by Hegelian dialectics. Thus, the problem is actually the solution. | 45 min |
| Point of View Matters: Celebrating the 100th birthday of John H. Weakland - Family & Brief Therapy Pioneer | | Room 10 |
| ☉ Wendel Ray - USA | 2019 marks John Weakland's 100th birthday. An important contribution of Weakland's & MRI colleagues was outlining why and how Point of View matters – it is not a matter of IF but HOW therapist biases influence therapy / supervision. Implications to systemic practice of therapist biases will be explored. | 45 min |
| The Role of Common Factors in Pivotal Moments in Couple and Family Therapy | | Room 7 |
| ☉ Birce Bingöl - Turkey | This brief session is about in session experiences that clients and couple and family therapists view as pivotal. Ten CFT therapists and thirteen clients were interviewed in order to understand what moments are reported as pivotal and what factors play a role in creation of these moments. Contributing author: Nilüfer Kafescioglu, Ph.D. | 20 min |
| Working with Abused Children in Bolivia: Changes in Empathy and Self-Efficacy | | Room 8 |
| ☉ Michele Smith - USA | Mission trips are opportunities to get resources to areas that have great need and provide support to the community being served. Altruism is associated with greater well-being, but are there other benefits? This study examined changes in empathy and self-efficacy in a group working with abused children in Bolivia. | 20 min |

| | | |
|---|---|------------------------|
| Improvitational Theatre And Family Therapy: Practice And Possibilities | | Room 8 |
| ☉ Matthew Selman - United Kingdom | This presentation explores the use of improvisational theatre training exercises in therapeutic work with couples and families. The rationale is described along with current practice and example of exercises. | 20 min |
| 11:30-13:30 | Welcome Lunch | Bodye Suite |
| 13:30-14:15 Workshops (45 min.) and Consecutive Brief Section (20 min.) | | |
| Utilizing Sex Positivity as a Model for Sexual Assessment with Couples | | Crombie B Suite |
| ☉ Shannon Dermer - USA Molli Mercer - USA Nicole Randick - USA | Couple therapy tends to be dominated by a sex negative approach rather than a sex positive approach. Sex positivity is a model that highlights the right to pleasure, eroticism, positive attitudes toward sexuality, and engagement in a variety of consensual, responsible sexual behavior free from fear, shame, and guilt. | 45 min |
| The Use of Sculpting in Therapy: Satir Transformational Systemic Therapy | | Room 1 |
| ☉ Jennifer Nagel - Canada | This experiential workshop will explore the use of sculpting to externalize the internal dynamics of what is going on within an individual, couple, or family in their relationships with themselves and others. | 45 min |
| Systematic Model of Intervention in High Conflict Post-Marital Child Alignment/Rejection | | Room 2 |
| ☉ Robert Colby - Canada | Intervention of the REACH Team focuses on understanding the personal and family history of individual family members in order to facilitate resolution in high conflict marital break-up where children become drawn into the conflict. Interventions that incorporate the historical personal dynamics can facilitate the family in refocusing on resolution. | 45 min |
| Islamic Psychology As An Applied Theory | | Room 5 |
| ☉ Heather Laird - USA | This session presents the theory of change, the role of the therapist, key concepts, interventions and treatment utilizing an Islamic Psychology. This is helpful in learning how to be a competent therapist for treating the Muslim population. Muslims make up almost 2 billion people of the world's population (roughly 25%). | 45 min |
| Role-Play And Skills Development | | Room 7 |
| ☉ Mo Yuen Han - Hong Kong Chiu Man Sze - Hong Kong | This study was about a social work degree program for social work students to develop core skills in client-centered therapy, solution-focused therapy and structural family therapy. Role-plays, based on scenarios designed by the students, were recorded as video and played within workshop's presentation. Peers and tutor provided feedback on role-plays. | 20 min |
| The Patterns Of Mutual Recovery Between Persons With Psychiatric Disability And Their Caregiver Under The Strength-Based Family Intervention | | Room 7 |
| ☉ Li-yu Song - Taiwan | This study aimed to explore the patterns of mutual recovery among the persons with psychiatric disability and their caregiver after receiving the Strength-based family intervention. The results revealed two major types: "Mutual bonded spiral recovery" and "accompanied mutual recovery". A close and harmonious relationship was conducive to the mutual recovery. | 20 min |
| Teletherapy Guidelines | | Room 8 |
| ☉ Lois Paff Bergen - USA Joanni Sailor - USA | Internet therapy created questions for regulators in the United States. Therapists need to consider how to ethically and legally provide teletherapy services. This presentation will provide information related to the delivery and regulation of teletherapy services developed by the Association of Marital and Family Therapy Regulatory Boards for our stakeholders. | 20 min |
| Expansion Of Family Therapy Services Within The Iwk Systems Of Care | | Room 8 |
| ☉ Rosalind Woodworth - Canada Amy Jones - Canada | The IWK Health Centre provides family therapy services in various settings and to different intensities. An overview will be provided of services offered, as well as recent adaptations to meet the needs of families in a more flexible manner. Training and peer supervision within the program will also be explored. | 20 min |
| 14:30-15:15 Workshops (45 min.) and Consecutive Brief Section (20 min.) | | |
| Countries As Families: Systemic Conceptualization And Treatment Plan For Different Countries Across The Globe | | Crombie B Suite |
| ☉ Judith Kellner - USA Martine Nisse - France Yudum Soylemez- Turkey | Countries, just like families, are systems that have interactional patterns that transmit across generations. In this panel, Turkey, United States and France will be explored from a systemic perspective and similarities, differences and ideas for collective growth will be discussed. | 45 min |
| Expressive Therapy Techniques for Working With Adolescents Impacted by Shame | | Room 1 |
| ☉ Daniel Sweeney - USA | Shame is an intense systemic emotional state based on the distortion that one is fundamentally flawed. Adolescents experiencing shame need a therapeutic experience that is nontoxic. Expressive therapies (art, sandtray, drama) provide a kinesthetic experience and therapeutic distance that helps adolescents process shame and experience abreaction in a safe environment. | 45 min |
| Integrating Neuroanalysis, Neurofeedback and Marriage and Family Therapy on the Cutting Edge of Mental Health Treatment | | Room 2 |
| ☉ Jeff Schutz - USA | This presentation provides innovative yet practical insights into how Neuroanalysis and Neurofeedback may be used as complementary treatment modalities to enhance Marriage and Family Therapy interventions. | 45 min |
| Online MFT Students' Experience in Professional Identity Development | | Room 3/4 |
| Linna Wang - USA Sage Jaurequi - USA | Online MFT students will share their perceptions and experiences of what hinders or contributes to their professional identity development process; if/how the lack of face-to-face interaction impacts the process, and if/how the in-person residency component of the online program alleviates the impact of lack of in person interaction. | 45 min |
| Responding to Risk Collaboratively | | Room 5 |
| ☉ Philip Messent - United Kingdom | In this workshop we will explore ideas about how we can respond to 'risk' in ways that are relational and contextual, open and collaborative, and appreciative of the strengths and perspectives our colleagues, our clients and their families. | 45 min |

| | |
|---|---|
| Cultural Humility in the Supervisor- Supervisee Relationship: Working with Emerging LGBTQ culture in the African Context | Room 9 |
| <p>☞ Amos Alumada Keya - Kenya Anne Wambugu - Kenya</p> <p>This workshop seeks to address the emerging issues of LGBTI culture in the African context within the supervisor-supervisee relationship. The phenomenon of LGBTI culture is increasing in the African context and cannot be ignored by mental health providers.</p> | 45 min |
| Self-Care For Therapists: Using Creativity To Explore Self-As-Therapist | Room 10 |
| <p>☞ Jennifer Patterson - Portugal</p> <p>How we show up in the treatment room, hold space with the client, and take care of ourselves within the context of self-as-therapist help us to stay present. This workshop will demonstrate via an experiential exercise (no art skills needed!) how creativity can benefit our self-care process.</p> | 45 min |
| Understanding Caregivers and Patients with Chronic Stage IV Metastatic Breast Cancer | Room 7 |
| <p>☞ Lucinda West - USA</p> <p>This program will increase knowledge for couple therapy with women diagnosed with Stage IV Metastatic Breast Cancer. The term metastatic and these patients are misunderstood. While terminal, patients are living longer due to research and invention of new treatment options; yet, they face mortality on a regular basis.</p> | 20 min |
| Views and Attitudes Toward Relationships that Start Online | Room 7 |
| <p>☞ Dilsah Ece Eren - Turkey Selenga Gurmen - Turkey</p> <p>Online platforms are being increasingly used as a venue to find romantic partners. Yet, there is controversy around relationship expectations, maintenance, and satisfaction. Empirical investigation of attitudes towards online dating and how it differs from other meeting styles in terms of relationship satisfaction may inform therapists when working with clients.</p> | 20 min |
| Factors Contributing To A Healthy Family Functioning Among Women Living In Communities With High Level Of Violence | Room 8 |
| <p>Aida Jimenez - Puerto Rico Aysha Concepción-Lizardi - Puerto Rico Jose Martinez - Puerto Rico</p> <p>This presentation explores how attachment styles, psychological symptoms and sociodemographic variables affect family functioning. The sample consisted of 122 poor Puerto Rican women over the age of 21 who had children between the ages of 6 to 12 years old, living in marginalized communities.</p> | 20 min |
| Processing Moral Injury through Therapeutic and Spiritual Collaboration in Caring for War Veterans | Room 8 |
| <p>☞ Kelly O'Lear - Germany</p> <p>This presentation discusses collaboration between therapy and faith in caring for those dealing with moral injury in military veterans. It defines moral injury, provides current research on the topic, and encourages local solutions of how to aggregate counselors and clergy in caring for those displaying moral injury in civilian communities.</p> | 20 min |
| 15:15-15:45 | Refreshment Break |
| 15:45-16:30 | Workshops (45 min.) and Consecutive Brief Section (20 min.) |
| Supporting "Family" During and After Divorce in Therapy | Crombie B Suite |
| <p>☞ M. Selenga Gürmen - Turkey</p> <p>Therapy with divorcing/newly divorced families may be challenging as it requires different approach with special intervention areas. Research guides practitioners on processing negative emotions and restructuring of the system while protecting well-being of family members, especially children. This workshop offers research-informed strategies for therapists who work with this specific population.</p> | 45 min |
| Engaging Spirituality Journeys in Family Therapy | Room 1 |
| <p>☞ Hugo Kamya - USA</p> <p>How do we as clinicians engage our personal journeys in our work in family therapy? How do we connect to our spirituality in this endeavor? This presentation will offer some ways to incorporate and harness our spirituality in our clinical work.</p> | 45 min |
| Attachment: Family Therapists Partnering with Schools and Communities | Room 2 |
| <p>Robert McKinney - USA Elisabeth Bennett - USA Hannah Brinser - USA Brennan Champaign - USA Dana Cram - USA Venette Melo - USA</p> <p>Every child needs a foundation of secure belonging; sadly, not all children find this at home. This presentation provides a knowledge base and hands-on application for therapists when partnering with school personnel and community leaders to create conditions for children to develop healthy attachment styles and thereby promote healthier families.</p> | 45 min |
| Metaphors in Healing Stories and Stories that Heal | Room 3/4 |
| <p>☞ William Scott - USA</p> <p>The therapist as an audience, empowers clients to become author-ities, and more involved in the construction of their own healing stories while also using metaphor and storytelling principles to construct and share stories that heal. Key elements of narrative practice will be shared which create space for transformative, client-generated metaphors.</p> | 45 min |
| A New 'U' in Systemic Bereavement: Undigestible Grief, Embodied Stories, Spirituality & CMM | Room 5 |
| <p>☞ Tracey Jane Johnston - United Kingdom Peter Robinson - United Kingdom</p> <p>Possibilities Psychotherapy Centre aims to present systemic bereavement therapy findings, whilst using the Co-ordinated Management of Meaning (CMM) as an interactional model to help therapists consider grief as a relational process, with an emphasis on stories of spirituality and grief, reflexivity and explorations of embodied and 'undigestible' grief processes.</p> | 45 min |
| Multiple Family Group Intervention For Chinese Families Of Children With Dyslexia | Room 9 |
| <p>Tak-Mau, Simon Chan - Hong Kong</p> <p>Multiple family group intervention, with reference to the key concepts of narrative practice, for those Chinese families will be demonstrated with live episodes. This presentation will focus on the intervention process of how to foster the family agency and identity, with pre- and post- intervention episodes to demonstrate its effectiveness.</p> | 45 min |
| Building Bridges For Children Through Divorce: Past, Present, Future | Room 10 |
| <p>☞ Geraldine Kerr - USA</p> <p>Family systems become destabilized through divorce. Relationships, rules, roles, and routines disintegrate into chaos which children have neither knowledge nor comprehension to understand. Therapists who help divorcing parents become aware of Relational Ethics (Boszormenyi-Nagy & Ulrich, 1981) simultaneously help build bridges between parents and their children's pasts, presents, and futures.</p> | 45 min |

| | | |
|--|--|------------------------|
| Parental and Professional Value Mismatch in Child Risk and Protection | | Room 7 |
| <p>© Yochay Nadan - Israel Netanel Gemara - Israel</p> | This paper identifies several of the mismatches at play when professionals encounter families belonging to diverse groups and assess risk for children. Two minority groups in Israel were studied. Findings indicate discrepancies between parents' and professionals' perceptions as well as their implications for the relationship between professionals and parents. | 20 min |
| Challenges Of Developing The Professional Identity Of The Family Therapy Profession In Sudan Analytical Descriptive Study | | Room 7 |
| Makia Himat - United Arab Emirates | The study aims at identifying the challenges that prevent the development of the professional identity of family therapy in Sudan. The study uses the analytical description method and relies on the available information about family therapy services in the academic context and the current practice . | 20 min |
| Experience of Grandchildren Facing In-law Conflict between Mother and Paternal Grandmother | | Room 8 |
| Ching Chi Maria Assunta Ho - Hong Kong | Literature lacks the perspective of grandchildren in facing adult's inter-generational conflicts. Using a qualitative research design, this study examined the subjective experiences and impacts of grandchildren coping in-law conflicts between mother and paternal grandmother living together and discussed the clinical implications for family counselling and intervention on inter-generational families. | 20 min |
| Differentiation Of Self And Relational Ethics: Bridging The Gap Between Nagy & Bowen | | Room 8 |
| Mercè Rived-Ocaña - Spain | "Differentiation of Self and Relational Ethics are the core elements used to explain the differentiation process. The exploration of their connection and its comparison in clinical and non-clinical populations could allow us a deeper understanding of how they operate within the family of origin and other significant relationships. | 20 min |
| 16:45-17:30 Workshops (45 min.) and Consecutive Brief Section (20 min.) | | |
| The Development of Parenting Coordination in South Africa and Child Participation | | Crombie B Suite |
| © Lynette Roux - South Africa | Internationally, parenting coordinators are increasingly being appointed in high conflict divorces to resolve disputes. This process provides constructive quick resolution to issues cost effectively. Inclusion of children in this process can be helpful but needs to be done with skill and caution. This process and ethical dilemmas will be discussed. | 45 min |
| Navigating Complexity in Feedback Informed Systemic Therapy | | Room 1 |
| © Robert van Hennik - Netherlands | Van Hennik and Hillewaere will invite workshop participants to explore how they can create a dialogical space, open for improvisation and collaborative learning and navigate creatively towards meaningful goals of family members. Presenters created a fluid therapy manual, substantiated by practice based research and responsive to the complexity of life. | 45 min |
| Avoiding a Deficit Perspective in Understanding the Family System | | Room 2 |
| © Alli Cipra - USA | This presentation will focus on the importance of understanding the family system as it is rather than how it "ought" to be. In many approaches and in general research, family systems are discussed, evaluated, and treated from a deficit perspective. | 45 min |
| Chameleon Families: Adaptations, Changes And Challenges Of Gay Male Parenthood | | Room 3/4 |
| © Dr. Carlos Temperini - Brazil | This study analyses discourses about gay male families in the Brazilian and American contexts. The theory is based on Bowlby, Winnicott and Badinter studies to discuss the importance of parenthood in infant and child development, besides a reflection on "the myth of motherhood" and their impact on gay male parenting. | 45 min |
| Sexual Development and The Talk: Not just about the Birds and the Bees | | Room 5 |
| © Anita Mehta - Canada Sarah Burley - Canada | The development of sexual identify is influenced by family. The sex talk has evolved from a discussion of birds and the bees to include gender identities, sexual orientation, pornography, and consent. This presentation addresses healthy sexual development and provides tools for working with families and couples on issues of sexuality. | 45 min |
| The Tools for Hope: Exploring the Architectures of Hope | | Room 9 |
| © Sue Robinson - United Kingdom Gill Kind - United Kingdom | The workshop will give a brief overview on the futures 3Horizons method as developed by futurists Curry and Hodgeson (2009). It will use the ideas of agitators, orchestrators and innovators to hold conversations about hope. | 45 min |
| Mindfulness As An Embodied Relational Resource In Couple And Family Therapy | | Room 10 |
| Edgardo Morales - Puerto Rico | We will examine how mindfulness, understood as present centered embodied relational presence, can be used by psychotherapists in couple and family therapy to expand their creativeness and sensitivity and help create an accepting, playful and open interactive space that can engender life affirming possibilities in the lives of its participants. | 45 min |
| Spiritual And Existential Literacy In Family Therapy Practice | | Room 7 |
| © Åse Holmberg - Norway | What is needed for family therapists to develop spiritual and existential literacy in their practice? This workshop presents a theory with seven perspectives based on a PhD constructivist Grounded Theory study with 12 clients and fifteen systemic family therapists in Norway. A tool for practice, education, supervision and further research. | 20 min |
| Social Construction Of Mate Preferences In Young Indian Adults | | Room 7 |
| © Sarayu Chandrashekar - India Malavi Madhusudan - India | Many Indian families consider marriage to be a definitive life cycle stage. In this paper, the authors propose an assessment model (MAIME) for clinicians to help their Indian clients deconstruct their culturally-shaped mate preferences, as not having these expectations met can result in significant relationship distress. | 20 min |
| An Attachment Model To Understand Family Dynamics: A Case Study Of An Adopted Child | | Room 8 |
| © Sylvia Martinez - Puerto Rico | The impact of abandonment during early childhood in the development of the human being and the possibilities of transformation through adoption will be discussed. Research has evidenced the importance of attachment in human relationships. Researchers and theorist have developed models to understand the impact of attachment in development. | 20 min |

| | | |
|--|--|------------------------|
| Emotional And Social Benefits For Mothers And Children: Play Therapy And A Second Language | | Room 8 |
| Chiemi Chiba - Japan Stacy Clause - USA | We discuss a mother and infant support program, and present a case study from both Japanese and American researcher vantage points, examining the "norms" of language, interaction and the social benefits of early second language input. We explain the use of interactive toys that set the stage for practicing social skills and exchanges. | 20 min |
| 17:45-18:30 Workshops (45 min.) and Consecutive Brief Section (20 min.) | | |
| The Story of Systemic Education in Kenya: An Ongoing Saga | | Crombie B Suite |
| Anne Wambugu - Kenya Evangeline Willms Thiessen - Canada Amos Alumada Keya - Kenya | In 2003, a collaboration between two visionary women and their respective institutions, PAC University in Kenya and TWU-ACTS in Canada, birthed the first systemic psychotherapy education programme in Kenya. From a BA, to an MAMFT and recently a PhD; come hear about the intercultural process, programme implementation and therapeutic impact. | 45 min |
| Family Based Practices and the (Un)holy Trinity of the Medical Model, RCTs and New Public Management | | Room 1 |
| ☉ Rolf Sundet - Norway | Practices within collaborative relationships with families who have not been helped by prior treatment opened up manners of acting and thinking in response to the constraint given by governmental guidelines and injunctions. A new liturgy within mental health was identified. The workshop will present and discuss implications of this. | 45 min |
| Multiple Layers Of The Trainee Therapist A Reflective Experiential Process Utilizing Graces & Genograms | | Room 2 |
| Roy Farquharson - United Kingdom Sam Petrie - United Kingdom | As part of the MSc in Systemic Family Therapy in Scotland trainees are given the task to create a multi-layered genogram developed over the academic year. This workshop will share this innovative reflective experiential process, outlining the theory and application, sharing trainees learning and experience in an interactive format. | 45 min |
| Trans-Inclusive Narrative Couple's Therapy | | Room 3/4 |
| ☉ Josh Boe - USA | Worldwide, lesbian, gay, and bisexual inclusive therapy practices have become more pronounced. Few family therapists receive training focused on the needs of transgender individuals and families. This presentation aims to provide a global perspective related to transgender issues and offer a critically informed, narrative framework when working with transgender couples. | 45 min |
| The Complexity of Listening in Family Therapy Practice | | Room 5 |
| ☉ Peter Rober - Belgium | By no means listening is obvious, especially in family therapy practice. By definition a family therapy session in a multi-actor dialogue and the therapist needs his/her whole body (ears, eyes and heart) to be present with the family members and to hear their stories. | 45 min |
| Usefulness And Limitations of Family Therapy in Working with High Conflict / IPV Cases | | Room 9 |
| Chung-ming Chan - Hong Kong | Based on the clinical work with a couple, this lecture presents the complexity of high conflict couple or intimate partner violence (IPV) cases and the challenge to mental health professionals as well as family therapists. | 45 min |
| From Hierarchical Model to Growth Model | | Room 10 |
| ☉ Nesteren Gazioglu - Turkey | Growing up in a hierarchical world sometimes leads people towards a hierarchical expectation in therapy as well. The family members or sometimes even the family therapist might get stuck in hierarchy. In this workshop, the participants will experience how hierarchical and growth model differ from each other in family therapy. | 45 min |
| Change In Work Functioning From Pre- To Post-Treatment In Feedback-Informed Cft In Norway | | Room 7 |
| ☉ Rune Zahl-Olsen - Norway | A presentation of change in work functioning from pre- to post-treatment in feedback-informed CFT. Measures on depression, couple distress and family functioning and improvement on these measures were used to predict work functioning at pre and post-treatment. The findings support and challenge the systemic theory. Clinical implications discussed. | 20 min |
| Relationships Impact The Establishment and Maintenance of Breastfeeding | | Room 7 |
| Andreja Poljanec - Slovenia | The process of breastfeeding establishment and maintenance is influenced by various factors, including psychological factors. We were interested in how relationship mother – grandmother/life partner/health professionals impact the establishment and maintenance of breastfeeding, as well as how they influence the emotional serenity of the mother at breastfeeding. | 20 min |
| Family Reconstruction As An Experiential Learning Tool For Family Therapists | | Room 8 |
| Simon Bloomfield - Sweden Cecilia Örnemark - Sweden | Family reconstruction is a three-generational intervention to reconnect with one's family roots and to widen understanding of present relations formed by family stories. It gives opportunities to learn from the past and make for new choices. In Sweden it is a mandatory experience in qualifying as a family therapist. | 20 min |
| A Case Study Of Extreme Self-Harming, The Blurred Line Of Psychosis Or Psychopathology | | Room 8 |
| ☉ Barry Viljoen - South Africa | This case study, attempts to highlight the manifestation of the double bind, presenting itself within the psychiatric setting. Taking place during the process of differentiation from the family of origin. | 20 min |

Friday, March 29, 2019

08:00-17:30 Registration for Congress

08:30-09:15 Workshops (45 min.) and Consecutive Brief Section (20 min.)

| | | |
|--|--|------------------------|
| Constellation Exercises For Supervision: Bringing Somatic Intelligence To Reflective Practice | | Crombie A Suite |
| ☉ Roger Lowe - Australia | Systemic constellation work brings a felt sense of bodily and spatial awareness to clinical supervision. It works in a language of intuition, gaze, direction, and proximity, adding to the richness of reflective practice. This experiential workshop will guide participants through a series of structured exercises aimed at illuminating these dimensions. | 45 min |

| | | |
|---|---|------------------------|
| Optimizing Supervision through Innovative Technologies | | Crombie B Suite |
| ☉ Andrea Wittenborn - USA Sailaja Subramaniam - USA | In this workshop, we will demonstrate a new off-the-shelf technology with the capacity to dramatically improve live and video supervision. We will also share findings from a recent study that tested the efficacy of implementing the new technology in a couple and family therapy clinic. | 45 min |
| Conquering Client Feedback Jitters: Build A Bridge And Get Over It! | | Room 1 |
| ☉ Khadijah Bhutto Ramirez - USA Mary Bozigian - USA | This workshop addresses common therapist reservations related to incorporating Feedback Informed Treatment (FIT) into clinical practice with adults and children. FIT can improve client outcomes, retention rates, and length of treatment. Participants will demonstrate competency in the three I's of FIT and learn to integrate evidence-based measures with confidence. | 45 min |
| Self-Harm In Adolescence: A Systemic-Attachment Perspective | | Room 2 |
| ☉ Ramón Karamat Ali - United Kingdom | Adolescents who suffer from depression or anxiety often engage in self-injurious behaviours (i.e. self-harm). During this workshop Dr Ram KA will introduce an interactional perspective on approaching this phenomenon. He will present a systemic-attachment framework which will assist family practitioners formulate and treat adolescents and their families. | 45 min |
| Strengthening the Self of the Therapist in Times of Distress & Despair : The Satir Transformational Systemic Therapy | | Room 3/4 |
| ☉ Sibel Erenel - Turkey | This workshop aims to support the therapist's self-growth, increase the therapist's awareness about own resources, internal processes and to reach congruence and create peace within; to be the source of hope and strength in times of distress. Participants will experientially learn The Satir Transformational Systemic Therapy Model (STST) tools. | 45 min |
| Man's Best Friend and Therapist? Using Animals in Couple Therapy to Heal Attachment Wounds | | Room 5 |
| ☉ Andrea Rodrigo - USA | This presentation will explore current research on human, couple, and animal attachment bonds and will explore how Animal Assisted Therapies (AAT) in conjunction with couple's therapy models may assist in the reparation of couple attachment bonds. | 45 min |
| Relationally-Focused Addiction Treatment: Creating a Group Process | | Room 9 |
| ☉ Eugene Hall - USA | As rates of substance abuse increase in the U.S., so does the need for effective, broad-based systemic treatment of addiction. This workshop details the development and implementation of a relationally-focused group process for the treatment of substance abuse in inpatient settings. Research, clinical, and organizational implications will be discussed. | 45 min |
| EFT - Couple Therapy and Trauma: Stage 2 and 3 in Treatment | | Room 10 |
| ☉ Judith Kellner - USA | EFT focuses on creating bonding experiences between couples in the session. Each partner needs to get in touch with their vulnerable emotions to be intimate with each other in the present. Trauma history complicates it. I will present 3 different videos of therapy sessions that accomplishes this goal. | 45 min |
| Building Integrated Teams To Address Mental And Behavioral Health Needs In Rural Primary Care | | Room 7 |
| ☉ Mike Olson - USA | A practice transformation program to coordinate and integrate team-based mental/behavioral health in rural primary care was developed. The presentation will describe how rural medical clinics partnered with a family medicine residency program and a HCO to build more effective teams, including medical family therapists and other mental health professionals. | 20 min |
| Family-of-Origin Functioning, Couple Relationship Quality, Differentiation and Anxiety | | Room 7 |
| ☉ Kübra Akar - Turkey Nilüfer Kafescioglu - Turkey | The aim of this study was to investigate the mediating role of differentiation and anxiety on the association between family of origin (FOO) functioning and couples' relationship quality. Participants are 150 married individuals. Measures included questionnaires about FOO experiences, romantic relationship quality, differentiation of self and anxiety. | 20 min |
| Relational/Individual Measures in Spanish, French and Chinese: Translation Quality and Availability | | Room 8 |
| Roy Bean - USA | Presentation will describe an evaluation of key measures of couple/family relational health and individual well-being. Over 150 relevant constructs (e.g., couple conflict, anxiety) have been investigated for the most-commonly utilized measures and these measures evaluated for quality of translations into three of the most-commonly spoken languages (Spanish, French, Chinese). | 20 min |
| Faith Positive Therapy; Comparisons of Implicit and Explicit Faith Interventions | | Room 8 |
| Teresa Wilcox - USA | A literature review of faith based Marriage and Family Therapy interventions and treatments. A presentation exploring treatment outcomes between implicit and explicit faith based interventions. | 20 min |

09:30-10:15 Workshops (45 min.) and Consecutive Brief Section (20 min.)

| | | |
|---|--|------------------------|
| Lecture: Can The Disparate Collection Of Systemic Psychotherapies Be United In Common Cause? | | Crombie A Suite |
| ☉ Richard Mc Kenny - United Kingdom | Disparate systemic psychotherapy models have come to be understood as connected together historically, via an evolutionary metaphor, with underlying theoretical assumptions and common mechanisms of change denied. I propose a new paradigm that challenges this view. Some consequences for theory, practice and research will be introduced. | 45 min |
| LGBTQ+ Individuals and Spirituality | | Crombie B Suite |
| ☉ Faith Wonbin Jung - USA | In this workshop, the presenter will discuss negotiating the intersection of sexual and religious identities, religious traumas that LGBTQ+ individuals face in religious environments, LGBTQ+ individuals' sexual identity development in a heteronormative religious environment and clinical implications as to how to honor religious LGBTQ+ individuals' stories in practice. | 45 min |

| | | |
|--|--|-----------------|
| Integrative Services; an International Perspective | | Room 1 |
| ☉ Kathryn Whittaker - Cayman Islands Khadijah Bhutto - USA Naveen Jonathan - USA Wayne Conron - Australia Susan Mary Benbow - United Kingdom Sarayu Chandrashekar - India M. Selenga Gürmen - Turkey Sarah Helps - United Kingdom Zeynep Zat - England | Understanding the collaborative efforts of our international colleagues globally assists the therapeutic community in many ways. This understanding helps to bring awareness to community therapists, incorporating a local culture perspective. From entering into therapy to medical and community referrals, including rehabilitation services are significant aspects of whole person treatment. | 45 min |
| Creating Reality Through Language: Paul Watzlawick & the MRI Brief Therapy Team | | Room 2 |
| ☉ Wendel Ray - USA Theresa Dronet - USA | Paul Watzlawick, and MRI Brief Therapy Center colleagues Dick Fisch and John Weakland, made influential contributions to the interactional view of human behavior and creation of brief therapy. Using rare video and audio recordings Watzlawick's contributions the pragmatics of human behavior, interactional/radical constructivist theory, and brief therapy will be presented. | 45 min |
| Family Therapy and an Adult with Asperger Syndrome | | Room 3/4 |
| Joyce Lai Chong Ma - Hong Kong Lily Xia - Hong Kong Joanne Chi Yan Wong - Hong Kong | This presentation would share our clinical experience in helping a Chinese family of a father with HFA in Hong Kong, who was depressed, became withdrawn and disconnected from his wife and the two children after a bankruptcy resulted from high-risk stock trading. | 45 min |
| Creative Approaches to Difficult Situations: Speed Dating Style | | Room 5 |
| Robert McKinney - USA Elisabeth Bennett - USA Dana Cram - USA Semam Singh - USA Rubjoyt Sing - USA Sara Swanson - USA McKenna Paulson - USA Hannah Brinser - USA | Rejuvenate your practice using creative techniques when working with difficult cases. This presentation involves a brief informative theoretically grounding PowerPoint followed by rotations in speed-dating format through difficult cases during which small groups conceptualize and develop creative interventions to fit each case using materials provided. Fun! and immediately applicable. | 45 min |
| Contemplative End-of-Life Care: New Possibilities for Systemic-based MFTs | | Room 9 |
| Evangeline Willms Thiessen - Canada Anne Wambugu - Kenya | The World Health Organization (1990) called for palliative/end-of-life care to be included in every country's health services. From an MFT certified "Thana(death)doula" perspective, a systemic, culturally sensitive approach for the dying and their families will be presented. Conversations will explore new possibilities for MFTs in a multidisciplinary care team. | 45 min |
| A Systemic Perspective Of Clinical Practice With Entrepreneurs And Their Families | | Room 10 |
| ☉ Catherine Egenes - USA Lorian Jordan - USA | Entrepreneurs experience major barriers to success, placing them at risk for mental, social, and emotional stress. This lecture presents central topics on the wellbeing of entrepreneurs and their families through case studies, research, personal and clinical experiences to assist therapists in developing the language and knowledge to work with entrepreneurs. | 45 min |
| First, Second And Higher Order Marriages. Population, Distribution, And Divorce. A Prospective Study | | Room 7 |
| ☉ Rune Zahl-Olsen - Norway | A presentation of a prospective cohort study with yearly follow up of all two sex marriages in Norway from 1981 until 2013 (N=774 725). An in-depth analysis of population, distribution, and divorce in four different constellations of first, second and higher order marriages. | 20 min |
| Helping American Working Families Cope with Adversity Through Class-Aware Therapy | | Room 7 |
| Karen Mackie - USA Patrica Goodspeed Grant - USA | We employ clinical case material to illustrate and organize our discussion of how social class dynamics constrain opportunities for successful coping in the presence of unanticipated losses and economic stressors in US families today. Class-related strengths that family therapists can encourage to support family and community resiliency are also identified. | 20 min |
| Making it Home: An Exploration of the lived experience of Third Culture Kids | | Room 8 |
| ☉ Jacqueline Mack-Harris - USA Robin Felix - USA | A discussion about what it is like to be a Third Culture Kid (TCK) and what psychotherapists can do to treat the distressed TCK. TCK is the name given to one who "has spent a significant part of his or her developmental years outside of the culture of the parents. | 20 min |
| Effects of Trauma and Life Adversities on Latinx Immigrants' Family Functioning | | Room 8 |
| ☉ Daniel Cooper - USA | The purpose of this study was to test the effects of life adversities and trauma on family functioning among Latinx immigrants in the US. Results revealed a significant negative association between exposure to adversities and family functioning. Implications for clinical assessment and treatment of trauma will be discussed. | 20 min |

10:15-10:45 Refreshment Break

10:45-12:00 Plenary Address: The Family Process Institute Distinguished Lecture

| | | |
|--|--|---------------------------|
| Transforming Life Narratives: Context, Connection, Genograms, Legacies and Having A Sense Of Home | | Fleming Auditorium |
| Monica McGoldrick - USA | This presentation will be about the key dimensions for assessing human problems and evolving healing solutions. Genograms are the core mapping tool of this work. A genogram is a map of who you belong to. This presentation will focus on viewing each person in the context of his or her cultural background, social class, gender and sexual orientation, family history, life cycle trajectory, and multiple identities in terms of interests, affiliations, and values. | |

12:00-13:30 Conference Lunch The Gordon School of Dancing Montrose Bodye Suite

13:00-14:15 Poster Session Bodye Suite

| | | |
|---|---|------------|
| Change in Couple Therapy a proposal of Generic Indicators of Change for Couple Therapy | | P 1 |
| Diana Rivera-Ottenberger - Chile | A naturalistic observation conducted of episodes and change moments in diverse couple's therapies, aimed at discovering the episodes and change moments in relationship during sessions of couple's therapies. The study methodology considered the structure and sequence of Consensual Qualitative Research | |

| | |
|---|---|
| Video Feedback Intervention to Enhance Parental Reflective Function in Primary Caregivers of Inpatient Psychiatric Children: A Pilot Feasibility Trial | P 2 |
| Fanny Leyton - Chile | The objective of this study is to implement a Video Feedback (VF) intervention to enhance Parental Reflective Function in primary caregivers of inpatient psychiatric children. Because there is no published research using VF with parents of children with severe psychopathology and in hospitalized context, this study is a pilot study. |
| Systemic Consultation in Child and Family Early Help Services | P 3 |
| Matthew Selman – United Kingdom | This poster describes a systemic consultation based service for front line staff in a 0-19 years early help child and family service in the United Kingdom. The model of practice is shared with reflections and evaluation of the initial six months of implementation. |
| A Qualitative Study Exploring African-American Lesbian Mothers' Family Experiences Using Both an Intersectionality and a Risk-Resilience Framework | P 4 |
| Brie Radis - USA | To generate an understanding of perspectives of lesbian African-American parents from an urban area on well-being, risk, and protection; explore reasons for risk and what parents need to protect members their families, and their community; and to identify strategies to support lesbian-parenting families; and to inform professionals. |
| It's Not Just A Dog: The Role Of Companion Animals In The Family's Emotional System | P 5 |
| Cassandra Leow - USA | This study explored the role of companion animals in the family's emotional system through the lens of Bowen Family Systems Theory. |
| The Father's Experience: Raising a Child with an Autism Spectrum Disorder | P 6 |
| Jacob Sandoval - USA | This research looks at the relationship between fathers and their Autism Spectrum Disorder diagnosed child(ren). Available research currently focuses on the whole family, or mothers alone. This qualitative, phenomenological study is a step toward filling the gap in research. |
| The Brightest Star in the Universe | P 7 |
| Lauren Mckenna - USA | People are consumed with swiping right or left on dating apps. Attempting to match their social exceptions with a life partner. It's easier to find the north star than a match. This presentation will explore the science of star constellation and how to help clients navigate in finding the one. |
| Power Shift Within a Couple's Journey Through Addiction | P 8 |
| Carly Brack Marketto - USA | Addiction impacts both individuals and their intimate partners. Recovery from addiction is difficult and the power dynamics of the couple can play a role in this process. This grounded theory study explores how power shifts through the recovery process. |
| Dementia: The Relational Web | P 9 |
| Susan Mary Benbow - United Kingdom | People living with dementia (PwD) live in a web of family and other relationships. Care plans rarely address relational support. A qualitative study, involving interviews with PwD and family carers, concluded that family counseling/ therapy has a potentially vital role to play, with likely benefit to all concerned. |
| Isomorphism in the Cambodian Context: A Situational Analysis of the Therapeutic Process | P 10 |
| Lorien Jordan - USA Desiree Seponski - USA | This poster presents a situational analysis of the isomorphic processes between therapeutic, governmental, and research systems in Cambodia. Findings indicate that therapists in Cambodia experience stigmatization in the larger culture and a lack of governmental support, which creates isomorphism of marginalization between clients and therapists. |
| Trafficking in Cambodia: The Accessibility of Mental Health Resources For Survivors | P 11 |
| Amber Kelley - USA Desiree Seponski - USA | Previously reported Cambodian trafficking statistics have been questioned due to lack of empirical evidence. This study, a survey of randomly selected national sample of Cambodian adults, examines personal and filial reports of trafficking. Availability and accessibility of mental health resources in areas where trafficking has occurred is also presented. |
| Disaster Preparedness Among Cambodian-Laotian Immigrants in the Gulf Coast of Alabama: Systemic Considerations | P 12 |
| Desiree Seponski - USA Denise C. Lewis - USA | Social inequalities among ethnic minorities and immigrants in the US have made preparations for disasters more arduous for these people. Using qualitative methods, this study explores how Cambodian and Laotian immigrants in the Gulf Coast of Alabama perceive and prepare for impending environmental challenges. Findings and possible interventions are discussed. |
| How Are You Doing Back Home?: Subjective Experience Of Those Who Remain Behind When A Significant Other Migrates | P 13 |
| Erick Senior - Puerto Rico Kathia Peña - USA Marileen Maldonado – Puerto Rico | This presentation explores the subjective experience of people who have remained in their country of origin while experiencing a separation from a significant other due to migration. The sample consisted of 215 Puerto Rican participants whose significant others had migrated during the last year. Systemic emerging themes will be discussed. |
| Enmeshment in Military Families | P 14 |
| Alexus Hamilton – USA | Researchers often combine two separate processes in regard to enmeshment: closeness, which promotes a secure attachment and mutual cohesion; and intrusive over involvement, which promotes dysfunctional maladaptive strategies and patterns. However, for military families, enmeshment can be a necessary tool to keep the family together. |
| Black Emerging Adults' Experiences Of Ethnic-Racial Socialization Messages From Diverse Sources | P 15 |
| Denzel Jones – USA Sarah Daniels - USA | This study focuses on social influences on Black ethnic-racial identity (BRI) development. Results indicate that (1) immediate family and friends are the most influential agents to youths' BRI development and (2) Black emerging adults tend to recall racial pride and egalitarian messages more prominently than racial barrier and negative messages. |

| | |
|---|---|
| Answering the Call of Duty: Violent Video Games and Family Therapy | P 16 |
| Sedenz Jones – USA Sarah Daniels - USA | This poster focuses on interactions between violent video games, aggression, differentiation, and felonious behavior. It will also outline considerations for psychotherapists working with families where one or multiple members engage this popular hobby. Research indicates that there is no causal link between violent videos, violent behavior, aggression, and felonious behavior. |
| Relationship Between Female Perpetration And Childhood Trauma | P 17 |
| Maryann Holt – USA Ginny Piletere - USA | This study explores the relationship between diverse childhood experiences (ACE's) and female perpetration of violence. Adverse childhood experiences are traumatic or stressful events. This study further investigates what ACE's female perpetrators have experienced and how those ACE's have contributed to females perpetration of violence against their partners. |
| Couple Therapists' Coupledom Beliefs, Romantic Relationship Experiences and Experiences in Therapy | P 18 |
| Sedef Oral – Turkey Senem Zeytinoglu Saydam - Turkey | Main purpose of this qualitative study is to gain deeper understanding into the reciprocal impact of therapists' social location, own experiences in romantic relationships, beliefs about coupledom and conducting couple therapy. This poster presents findings and clinical implications of the study. |
| How the Positive Functioning of the Spousal System Affects Burnout Rates Amongst Licensed and Vocational Ministers within a Church Setting | P 19 |
| Samuel Baney – USA Mitch Pohl - USA | This study sought to determine whether the optimal functioning of the spousal system could effectively reduce the effects of reported burnout for persons engaged in ministerial work within a church setting. Results of the study have demonstrated that there is not a significant correlation between levels of spousal support and increased or decreased levels of burnout for those engaged in ministry. Results also indicated a strong need to explore the hesitancy towards and resistance of clergy to engage in research related to burnout, in order to more effectively conduct future research intending to reduce burnout amongst clergy. |
| The Impact Cochlear Implants Have On Adult-Children Of The d/Deaf And Hearing Community | P 20 |
| Nicole Harlan – USA | The purpose of the research is to examine how cochlear implants have an impact on the social and relational experiences the hearing-impaired adult and their family members have. Subsequently, the qualitative interviews examined how their relationships were developed and made different by the cochlear implants. |
| A Supervisee's Experience Of Flexible Formats Of Couple And Family Therapy Supervision | P 21 |
| Jeffrey McCrossin – Canada Marjorie Rabiau - Canada | This poster will describe the experience of a Canadian supervisee in a couple and family therapy clinic. A visual model of flexible formats of supervision (from live to delayed case consultation) will be proposed to support decision making for methods of supervision intervention. |
| 'Attachment Injuries' from the Lens of the Therapist: A Qualitative Study | P 22 |
| Nikita Oberoi – India | In-depth interviews were conducted with 10 therapists with the aim of exploring their understanding of the EFT-based concept of attachment injuries. The data was subjected to thematic analysis and was also used to construct items for a scale being developed to assess attachment injuries in married individuals. |
| Children, Youth and Adult Drawings of Mental Health Stigma in Multi-ethnic Communities | P 23 |
| Ana Jimenez - USA | This qualitative study examined the drawings of children, youth and adults that participated in a mental health "stigma reduction arts program" in Orange County, California. Preliminary data will discuss the various themes collected from the drawings; and a comparative analysis of children, youth, and adults from various multi-ethnic communities. |
| Understanding Domestic Violence In Peru: A Critical Ethnographic Study | P 24 |
| Tatiana Melendez-Rhodes - USA | Twenty Peruvian women survivors of domestic violence (DV) participated in this study. The purpose of this study was to explore Peruvian women's' voices, experiences, and perceptions related to DV, and explored the following themes: Power and control, family and social support, socio political system, and resistance. |
| Is Social Connection a Common Protective Factor for Wellness? | P 25 |
| Jessica Lenington – USA | Is Social Connection a Common Protective Factor for Wellness? This work will (1) review the last several decades of quantitative research, (2) summarize the collective findings, and (3) present ideas for future directions and best practices. |
| An Ambivalent Compassion: Are Commuter Therapists In Crisis? | P 26 |
| Asmaa Alotaiby - USA | Commuting for work is contemporary challenge in different professions. In recent years, there have been a growing number of therapists who have begun to commute long distance to reach out marginalized clients, with all the success being evident, yet commuters do experience unique challenges. |
| Where's God in Your Genogram? | P 27 |
| Sarah Causey – USA Daniel Stillwell - USA | Genograms are a classic and powerful tool in the family therapist's toolbox. Using a case to illustrate, this poster will demonstrate how depicting God, bodies of faith, sacred values, and meaning-making processes on a genogram allows the client to grow through deep interpersonal and intergenerational issues. |
| Supporting Families with Children Experiencing Grief and Loss | P 28 |
| Hannah Brinser – USA | Grief experienced during youth is associated with familial, social, and mental health difficulties. Mental health professionals have an opportunity to be a source of knowledge for families. Effects of loss on the family system, protective and risk factors, interventions and techniques, types of loss, and social support will be discussed. |

| | | |
|--|--|-------------|
| Gay Male Couples: The Counseling Experience, Mandates, and Professional Implications Brennan Champagne – USA | This poster presentation adopts a conceptual approach, through published, peer-reviewed literature to help attendees understand the experience of gay male couples in counseling, our mandates as counselors, and professional implications. Ultimately, this poster proposes a phenomenological study to better understand the counseling experiences of this population. | P 29 |
| Supporting Families: Children Who Have Experienced Neglect Nikki Durstling – Canada | Neglect is proven to be the most prevalent form of child maltreatment. Children can experience abnormalities in the structure of the brain, altered stress response systems, abnormal physical development, as well as cognitive and executive functioning delays. Effects on the developing brain, protective factors, recognition, and interventions will be discussed. | P 30 |
| Attachment and Trauma-Focused Integrative Therapy for Clinicians Working with Adoptive and Foster Families Sarah Swanson – USA | This presentation outlines an integrative model of assisting adoptive and foster families to form secure-attachments with children from trauma. Focusing on a unique blend of trauma informed therapies, clinicians will be provided with methods for empowering caregivers to create meaningful parent-child relationships based on a secure bond and trauma-based psychoeducation. | P 31 |
| “Stop Making Sense” Report From A Randomized Text Design Study Rolf Sundet – Norway | An experimental attempt at contesting an epistemological position is presented. By not trying to ascribe new meaning to utterings, nor providing space for the marginalized, we have systematically destroyed meaning in a text. Using a randomized text design, we have provided space for non-meaning within the mental health discourse. | P 32 |

14:30-15:15 Workshops (45 min.) and Consecutive Brief Section (20 min.)

| | | |
|--|--|----------------------------------|
| Workshop: Hypothesising-Circularity-Neutrality: A Polysemous Reading Of A Classic Paper © Richard Mc Kenny - United Kingdom Raphael Cadenhead - United Kingdom | Accounts of the development of the Milan team's ideas emphasise their early psychiatric and psychodynamic trainings, their later work a counterpoint to these influences. We propose that Selvini Palazzoli's Catholic faith is central to her therapeutic innovations, and essential to understanding the Milan model within a 'paradigm of gifts'. | Crombie A Suite 45 min |
| Family Therapy Evolution in Four National Contexts: Our Past, Present and Hopes for Future (Part 1) © Tatiana Glebova - USA Monica McGoldrick - USA Anikó Pogary - Hungary Emoke Tarján - Hungary | We will explore family therapy evolution in Hungary, Russia, Turkey and the USA, looking at where we have come from, where we are now and where we hope to go in the future. We will use Gaudí's artistic work as an illustration of and inspiration for principles of our profession. Other contributing presenters include: Fatma Arici-Sahin and Ibrahim Keklik. | Crombie B Suite 45 min |
| Keep the Experience First: Bridging the Gap between Spirituality & Emotion Focused Therapy © Michelle Engblom-Degmann - USA | Given the highly relational and often spiritual nature of Emotionally Focused Therapy, removing the spiritual-self of therapists of faith from therapy is often impossible, and should instead be integrated in a thoughtful and intentional way. This presentation, through an experiential process, will examine how this can be accomplished. | Room 1 45 min |
| Family Therapist Augmented Program For Physicians In Training Barbara Hernandez - USA Edward Tagge - USA | This presentation describes an 8-year program of family therapy augmented education for medical students, residents and physicians in a medical arts university. An overview of successful programs and initiatives will be described as well as steps family therapists can take to create a similar role in local clinics and hospitals. | Room 2 45 min |
| Integrating Matters of Faith in the Practice of Family Therapy © Jake Johnson - USA | This presentation will offer theories for conceptualizing the integration of one's faith in clinical practice, outline the risks and potential benefits of integrating matters of faith in family therapy, and provide tools for the ethical integration of matters of faith in therapy with one's clients. | Room 3/4 45 min |
| Global and Relational Factors that Contribute to Domestic Violence © Jason Whiting - USA | Domestic violence is an international health crisis, causing trauma and pain worldwide. Factors that contribute to family violence include social norms and laws, as well as relational modes like anger, control, and entitlement. This workshop will discuss how therapists can identify and address these factors in treatment. | Room 5 45 min |
| Family Therapy, The Crucial Component in Recovery From Dual Disorders © Constant Mouton - Netherlands | When treating dual disorders (addiction plus another mental illness), early family involvement has been found to improve entry into treatment rates and several other outcomes. The presentation describes the impact of integrating Family Therapy focused on increasing family resilience, into an existing evidence-based treatment model for addiction in the Netherlands. | Room 9 45 min |
| Jazzing with the 'Mirrors of Possibility': Co-Creating Magic Moments in Couple Therapy © Peter Robinson - United Kingdom Tracey Jane Johnston - United Kingdom | The workshop presents the 'Mirrors of Possibility' metaphor, a recently developed relationally reflexive, multi-faceted method for 'playfully jazzing' with systemic issues in couple therapy. The method facilitates re-positioning and the collaborative construction of multiple possibilities, rich descriptions of difference, and the emergence of transformative experiences. | Room 10 45 min |
| A Family Therapy Intervention For Couples After Prostate Cancer Surgery © Liz Forbat - United Kingdom | This paper will describe a clinical manual to guide systemic therapy for couples affected by prostate cancer. The paper also reports data from a randomised control trial and feasibility/acceptability data testing the new model. | Room 7 20 min |

| | | |
|---|---|------------------------|
| Findings Of An Auditory Hallucination Simulation On Families Of Voice Hearers | | Room 7 |
| ☉ Martha Mason - USA | Shared are findings from a study which explored the use of a simulated auditory hallucination experience as an effective psychoeducational method to increase family support during client treatment for Schizophrenia. It addresses how important family support is to treatment, and how we can better engage families in treatment efforts. | 20 min |
| Fair Practice: Gender And Tribe Discrimination In The Medical Practice | | Room 8 |
| Asmaa Alotaiby - USA | Do women face difficulties and lack of support in the workplace compared to men, are they perceived less competent, or less motivated in medical practices. Despite of the significant number of women in medical practices, it is still male dominant and higher positions are lead by men. | 20 min |
| Improvisational Theatre And Family Therapy: Practice And Possibilities | | Room 8 |
| ☉ Matthew Selman - United Kingdom | This presentation explores the use of improvisational theatre training exercises in therapeutic work with couples and families. The rationale is described along with current practice and example of exercises. | 20 min |
| 15:30-16:15 Workshops (45 min.) and Consecutive Brief Section (20 min.) | | |
| Socioculturally Attuned Family Therapy | | Crombie A Suite |
| ☉ Teresa McDowell - USA Carmen Knudson-Martin - USA | Presenters share core principles for Socioculturally Attuned Family Therapy. They explain how this approach can be applied across family therapy models to promote relational equity. They highlight the importance of connecting societal systems and power dynamics and offer a transtheoretical framework for encouraging transformational, 3rd order change. | 45 min |
| Family Therapy Evolution in Four National Contexts: Our Past, Present and Hopes for Future II | | Crombie B Suite |
| ☉ Tatiana Glebova - USA Monica McGoldrick - USA Anikó Pogary - Hungary Emoke Tarján - Hungary | We will explore family therapy evolution in Hungary, Russia, Turkey and the USA, looking at where we have come from, where we are now and where we hope to go in the future. We will use Gaudi's artistic work as an illustration of and inspiration for principles of our profession. Other contributing presenters include: Fatma Arici-Sahin and Ibrahim Keklik. | 45 min |
| Power Dynamics In Therapeutic Relationships: Lessons Learned From Immigrant Therapists | | Room 1 |
| ☉ Alba Nino - USA | As people, we have different social locations (race, gender, etc.) Consequently, we have experiences of privilege and/or oppression. These affect the power dynamics in therapeutic relationships. We will learn from immigrant therapists' testimonies how these dynamics manifest clinically, how obstacles can be handled, and how to use our power wisely. | 45 min |
| The Role of Systemic Oppression on Family Dynamics and Therapy | | Room 2 |
| ☉ LaVonya Bennett - USA Kim Stewart - USA | Psychological literature has begun to explore the role of identity-based discrimination and systemic oppression on psychological well-being. However, the implications for this burgeoning research remains underdeveloped in its practical applications in family therapy. This presentation conceptualizes the role of insidious trauma (identity-based trauma) for marginalized communities within family therapy. | 45 min |
| Integrating EMDR and the Metaframeworks perspective to Heal Psychological Trauma in Couples | | Room 3/4 |
| ☉ Diana Mille - USA Anibal Torres Bernal - USA | This presentation provides an innovative and in-depth look into the integration of Eye Movement Desensitization and Reprocessing (EMDR) and a seldom considered and carefully crafted family systems modality, namely the Metaframeworks Perspective, to heal trauma in a systems paradigm. | 45 min |
| Positioning Change - Changing Position | | Room 5 |
| ☉ Simon Burton - United Kingdom Benedicte Schilling - United Kingdom | Without awareness of ourselves as tools for creating change, we can become an obstacle to any change to take place. It is so easy to get stuck and stay stuck. The ability to change our position and maintain good therapeutic relationships can make all the difference. | 45 min |
| Use of Self; Satir Transformational Systemic Therapy | | Room 9 |
| ☉ Linda Jane Lucas - USA | Satir Transformational Systemic Therapy Model (STST) uniquely encompasses the intrapsychic and interactive components of therapy. STST therapists practice therapeutic levels of competence, confidence, and congruence. Use of Self of the therapist involves trusting intuition to guide the therapeutic process, recognizing and resolving triggers within the therapist. | 45 min |
| My Faith Matters! | | Room 10 |
| ☉ Angela Cherubin - USA | We have been taught to keep faith and spiritual beliefs out of the therapy room. When a client brings up their faith I feel crippled and unable to relate, even though I might resonate with them. How do we include spirituality and faith in the therapy room? | 45 min |
| Individual, Relational and Familial Factors in Change Over Time of Newlyweds' Adjustment Genealogy and Identity in the Central American and Caribbean Diaspora | | Room 7 |
| ☉ Nilufer Kafescioglu - Turkey | This presentation is about a longitudinal study with 252 newlywed couples conducted to understand the associations between their individual, relational, familial factors, and changes in dyadic adjustment over time. The presentation will include discussion of how newlyweds' marital adjustment changes and clinical implications that can be concluded from the findings. | 20 min |
| Invisible Wounds: Attachment Injury as Crucible for Attachment Related Issues in Couples | | Room 7 |
| ☉ Nikita Oberoi - India | Qualitative data collected from married individuals dealing with attachment injuries was analysed so as to capture the lived experience of these phenomenon. With a secure attachment bond being the foundation of a healthy marriage and over-all well-being, the need to pay keen attention to attachment-related issues will be expounded. | 20 min |

16:15-16:45 Refreshment Break

16:45-18:00 Plenary Address: Imelda McCarthy

Co-Creating Fifth Provinces Or Islands Of Support In These Times Of Social Crises

Fleming Auditorium

Imelda McCarthy - Ireland

We are at a time of social, financial and ecological mis-alignment at this point in our experiences of living on our planet. From her own experience, Imelda, over the years, has come to appreciate and know the importance of solidarity and communities of support (Fifth Provinces) professionally and personally. When we were building the field of family therapy this was true and it is more so called for at this time of contraction (of money services, treatment possibilities, etc.) and rising inequalities. She will also talk about the importance of systemic reflexivity in coming to know, 'who we choose to be and what we stand for' together with the consequences of our (inter-)actions for our own and our client's contexts and ecologies. She will also suggest that meditation practices can play a big role in helping us to achieve equanimity in our lives and work.

19:00-21:00 Film Festival

Film Festival Scholarship Fund Raiser

Fleming Auditorium

Wendel Ray - USA
Theresa Dronet - USA

A film festival A "live" look at the birth of Systemic Family Therapy: A festival featuring "live" examples taken directly from the Don D. Jackson Archive Collections

COST: Professionals, \$10 ----- Students, \$2

Saturday, March 30, 2019

08:00 - 15:00 Registration for Congress

08:30-09:15 Workshops (45 min.)

Engaging Families in Child Trauma Treatment

Crombie A Suite

Ⓢ Susan McConaughy - USA

Widely-used, evidence-based child trauma treatment models view the possibilities of engaging parents and families in the child's recovery in very different ways. Family therapists can draw from these models a variety of useful evidence-based treatment strategies parents and families can use to help their children recover from trauma.

45 min

A Picture Is Worth A Thousand Words: A Snapshot To Understanding The Various Use Of Genograms

Crombie B Suite

Deborah Watson - USA
Ashley Cosentino - USA
Lauren McKenna - USA

The genogram has extended well beyond its origins as a family evaluation tool. As an assessment and intervention it continues to be broadened and expanded. In this interactive workshop participants will learn about the multitude of uses of genograms as an assessment and intervention in different models and contexts.

45 min

Breakthru Approach - Turning Obstacles into Opportunities for Teenagers and Young Adults Who Learn Differently

Room 2

Phoebe Long - Malaysia

This paper offers a practical framework to handle stress and support children and teenagers who "learn differently" using the Breakthru Approach. It is a dynamic collaborative process between parents and individuals who learn differently to unlock the innate ability, turning obstacles into opportunities and enhance the potential for learning.

45 min

Pathfinders – the Open Path Method - Collaborative Therapy

Room 3/4

Reinhold Schäfer - Denmark
Anja Katharina - Denmark
Jytte Gandløse - Denmark
Staffan Røjien - Denmark

"The workshop presents the Open Path Method developed with youngsters (age 15 - 25, psychological vulnerabilities or drug abuse):1. Subject guided group sessions
2. In-session-collaboration between client, social worker and external consultants by using reflection loops3. Stepped care setup: social work - therapy
Workshop includes reflective participant's involvement"

45 min

The Ethos and Ethics of Global Family Therapy

Room 5

Ⓢ John Miller - China

Western originating family therapy has become increasingly popular in Asian contexts. International scholars are discussing the intricacies of exporting complex clinical models to Eastern cultures. What parts can be meaningfully transplanted to another cultural context? What strategies are uniquely indigenous? These and related topics will be explored in this presentation.

45 min

Open Dialogue in Context

Room 9

Ⓢ Nobuhiko Asai - Japan
Catherine Thorley - United Kingdom

We come from different parts of the globe having met In Helsinki on Open Dialogue training. We aim to give you a flavor of what Open Dialogue is and its application in different contexts. We will also discuss how it has affected us both personally and professionally.

45 min

STAA Assessment: Sex Therapy with African Americans

Room 10

Sarayu Chandrashekar - India
Anike Adekoya - USA
Malavi Madhusudan - India

The authors propose a treatment/assessment model that combines narrative therapy, timeline techniques and adapted themes from the Intersystems approach to help MFTs better collaborate with African American couples presenting with sexual concerns in therapy. This model can be adapted for use with clients of the African diaspora worldwide.

45 min

Clinical Work with Couples Experiencing IPV: Finland, Great Britain, and U.S.

Room 7

Ⓢ Sandra Stith - USA
Juha Holma - Finland
Juha Metelinen - Finland

In this workshop, we discuss how research from Great Britain, Finland and the U.S. has influenced our work with couples who have experienced partner violence. We highlight the importance of creating safety, building on strengths, and encouraging dialogue among couples. We emphasize the value of international learning and research.

45 min

Practicing Evidence Based Treatment In Evidence Based Ways

Room 8

Ⓢ Thomas Sexton - USA

Systematically monitoring the process and outcomes of treatment become one of most important emerging areas of research and development in Family Therapy. Measurement-Feedback systems provide an opportunity to significantly improve the translation of good practices into community settings, improve outcomes and move the field forward.

45 min

09:30-10:15 Workshops (45 min.)

| | | |
|--|---|------------------------|
| The Therapeutic Use Of Digital Arts To Decrease Mental Health Problems Among Latino Youth | | Crombie A Suite |
| Ⓢ Ana Jimenez - USA | This study examined the nature of a community-based therapeutic arts program in California that utilized Digital Arts to decrease mental health problems of low income Latino Youth. The study aimed to uncover the benefits of this innovative approach and discuss the main themes identified by the participants in this study. | 45 min |
| Global Collaborations in Family Therapy Training | | Crombie B Suite |
| Cadmona Hall - USA Anne Wambugu - Kenya | Cross cultural collaboration has become easier as the ability to reach across the globe and connect via technology has improved. Various strategies utilized to develop culturally competent and socially just training opportunities across three training programs in Kenya, Canada and the USA will be discussed. | 45 min |
| Clinical Supervision from a Carl Whitaker Perspective: A Supervisor-Supervisee Dialogue | | Room 1 |
| Ⓢ William Boylin - USA Sebastian Perumbilly - USA | Carl Whitaker's Symbolic Experiential Family Therapy was a unique contribution to systemically-focused psychotherapy. The presenters, as university faculty, will identify, illustrate and appraise Whitaker's contribution and its contemporary relevance for clinical supervision. Discussion will include Whitaker's concepts such as the person-of-the-therapist, the use of creativity and the absurd, and existentialism. | 45 min |
| Investigating Systems of Power in Clinical Work: Avoiding Complicity and Lessening Domination | | Room 2 |
| Ⓢ Megan Murphy - USA Rebecca Harvey - USA | Therapists can investigate power differentials in therapy or ignore them and risk complicity in systems of domination and oppression. This workshop outlines how to identify patterns of power in sessions and provides suggestions for therapists to address power in session that invite clients to ways of interacting which lessen domination. | 45 min |
| Understanding Functional Neurological Symptom-Disorder From an Integrative Interactional Approach: A Case Study | | Room 3/4 |
| Ⓢ Linda Dennis - New Zealand Warwick Phipps - South Africa | Functional neurological symptom disorder, formerly known as conversion disorder and hysteria, draws on reductionist philosophy that has limited value for family therapists. A case study will be presented that highlights these limitations and demonstrates how the application of the integrative interactional approach provides new opportunities for therapeutic healing. | 45 min |
| Accreditation Process for Marriage and Family Therapy Training Programs | | Room 5 |
| Ⓢ William Hiebert - USA John Lawless - USA | Members of the International Accreditation Commission for Systemic Therapy Education (IACSTE) will provide information for programs desiring accreditation as well as answer questions from programs already accredited. | 45 min |
| Assessing Marital Viability: The True Love Question | | Room 9 |
| Russell Brethauer - USA | This workshop presents of model of assessing marital viability based upon the premise that bilateral true love is the key experience in enduring, healthy marriages. | 45 min |
| Ambiguous Loss & Families Affected by Mental Illness | | Room 10 |
| Ⓢ Anna Bohlinger - USA | In this workshop, participants will use a U.S. based sample to understand how parents of children affected by mental illness conceptualize the diseases in their own and family lives, understand how these parents experience ambiguous loss, and construct and enact hope in their own, their families', and their community lives. | 45 min |
| Scale Development in the Area of Couple Therapy: The Case of Attachment Injuries | | Room 8 |
| Ⓢ Nikita Oberoi - India | This presentation looks at the issues involved in developing a scale to assess the construct of attachment injuries, in a collectivist society. The need for such a scale, the steps involved, and preliminary findings from the first phase of the study will be discussed. | 45 min |

10:15-10:45 Refreshment Break

10:45-11:30 Workshops (45 min.)

| | | |
|--|--|------------------------|
| Aging and Mental Health in America: A Study of Brief CBT with Older Adults | | Crombie A Suite |
| Ⓢ Kimberly Stewart - USA LaVonya Bennett - USA | A patient-randomized clinical trial was conducted at two VA Medical Centers to evaluate the effectiveness and implementation potential of an integrated brief cognitive behavioral therapy in primary care settings. This presentation examines the feasibility of using bCBT among older adults and discusses implications for families of aging individuals. | 45 min |
| Families and Addictions: Forgiveness as a Powerful Clinical Tool | | Crombie B Suite |
| Camino-Gaztambide Richard - USA Eunice Malave de Leon - USA | Addictions are complex behaviors that have a profound impact on the individual, family, and society. Forgiveness can transform negative emotions for oneself or others to achieve or sustain recovery. The purpose of the workshop is to offer the clinical underpinnings that can facilitate the implementation of forgiveness in practice. | 45 min |
| On the Nature of Difference and Inequality in Therapeutic Practice | | Room 1 |
| Malcolm Robinson - Australia Catherine Sanders - Australia | Inequality is one of the major 21st century challenges, manifest in the unequal relationship between the 'citizen-consumer-client' and the institutions of the state as they appear in therapeutic practice. BowerNote is a family-systemic protocol for conceptualizing and managing political, problem and psychological inequality in that process. | 45 min |
| Change-Focused Therapy (CFT) of Depression & The Concept Of De-Contracting the Contract with Depression | | Room 2 |
| Noga Nabarro (Rubinstein) - Israel | Persistent moderate depression, is definitely a buffaloing problems in systemic therapy. Even long term psychiatric drugs treatments fail to terminate them. The presenter will demonstrate her concept of The Contract with Depression and unfold in video the process and CFT techniques of intervening to De-Contract the contract in Family Therapy. | 45 min |

| | | |
|--|---|------------------------|
| Attachment vs. Differentiation in Couple Therapy | | Room 3/4 |
| © Adam Fisher - USA | This workshop will explore attachment and differentiation in treating couple distress. Divergence, convergence and integrative possibilities among the models and the broader theories will be explored. Examples of key models rooted in each theory will be given, along with specific strategies. | 45 min |
| Counseling Couples and Families Impacted by Substance Use Disorders (SUDs) | | Room 5 |
| Amy Williams - USA Kelsey Pringle - USA | Presenters will describe individual and systemic developmental processes that impact and are impacted by SUDs and identify systemic impacts of SUDs. This information will be synthesized to inform case conceptualization, theoretical perspectives, and intervention selection and applied to the treatment of common concerns among couples and families impacted by SUDs. | 45 min |
| Blinded by Privilege: A Critique on the Multicultural Application of The Satir Model | | Room 9 |
| © Rachel Miller - USA Eunice Makunzva - USA | Positions of privilege create blind spots in the development of theory. The Satir model is no exception. This lecture will explore integrating outside concepts and components to provide a pathway for addressing and healing wounds of societal oppression and issues of social justice within a Satir Model framework. | 45 min |
| Antisocial Personality Disorder: An Interactional Approach | | Room 10 |
| © Marjorie Moolman-Nel - South Africa Warwick Phipps - South Africa | The interactional approach assumes that how individuals interact determines the nature and quality of their mental health. Antisocial personality disorder is associated with challenging, rigid, and often harmful patterns of interactions. Therefore, clinical consideration is given to this disorder as well as the treatment considerations from an interactional approach. | 45 min |
| Promoting International Immersion in Marriage and Family Therapy Programs Around the World | | Room 7 |
| © Tatiana Melendez-Rhodes - USA Sebastian Perumbilly -USA | Presenters will share their experiences conducting international courses as faculty members with an international immersion component with MFT students from U.S. universities. Using an ecological framework, participants will learn the main components of developing, conducting, and delivering an international course, and the preparation involved in pre-departure, immersion, and post-travel stages. | 45 min |
| Re-visioning the "Supervisory Working Alliance" and Cultural Issues in Supervision: Using the IPscope | | Room 8 |
| © Jeff Chang - Canada Monica Sesma-Vasquez - Canada Ka Man Cheang - Singapore | The IPscope, developed by Dr. Karl Tomm and colleagues, provides a relational conceptualization of human behavior. The presenters will illustrate how systemic supervisors can use interpersonal patterns IPs to conceptualize the supervisory working alliance, to assist supervisees to track family interactions, and provide an opening to reflect on cultural issues. | 45 min |
| 11:30-13:00 | Closing Lunch | Bodye Suite |
| 13:15-14:00 | Workshops (45 min.) | |
| The Use Of Sound Healing To Enhance Family Cohesion | | Crombie A Suite |
| Mixel Ventura - USA Ana Jimenez-Hami - USA | The present qualitative study examined the nature and benefits of Sound Healing at a community-based family wellness program as a therapeutic intervention among youth with special needs and their parents. | 45 min |
| Co-Creating Fifth Provinces with Imelda McCarthy | | Crombie B Suite |
| © Imelda McCarthy - Ireland | Following from her keynote address, Imelda will lead a meditation exercise showing how to open ourselves to our basic interconnected Being as an important resource in building Fifth Provinces (communities of support and sanity) in our lives and work. | 45 min |
| How Many?! Working with Polyamorous Client Systems | | Room 1 |
| © Daniel Stillwell - USA | The family unit is changing. More and more couple and family systems are opening their boundaries to include other committed partners. This workshop will discuss various polyamorous systems and how systemic therapists are uniquely suited to work with them. Specific poly-friendly interventions and culturally sensitive strategies will be discussed. | 45 min |
| Different Brain – Same Yearnings | | Room 2 |
| © Corrinna Douglas - Canada | With the evolution of therapy, the greatest gift we can offer our clients is change...change in how we facilitate therapy. This workshop will focus on children and families who are impacted by Fetal Alcohol Spectrum Disorder and Autism, and will offer distinctive therapeutic strategies that accommodates unique brain functioning. | 45 min |
| Rituals Of Cleansing And Repossession: An Africentric Approach To Treatment Of Moral Injury | | Room 3/4 |
| © Augustine Nwoye - South Africa | This paper discusses the types of rituals of cleansing and repossession available in African cultural traditions for treating the moral injury of returnee child soldiers in contemporary Africa. | 45 min |
| Family Therapy as a Politics of Practice | | Room 5 |
| © Glenn Lerner - Australia | The paper situates family therapy in the contemporary politics of evidence-based practice. It explores how family therapists can best preserve the uniqueness, spontaneity and creativity of the therapeutic encounter. Dialogic and interactional exercises will invite participants to contribute their own thoughts about family therapy as a politics of practice. | 45 min |
| Solution Focused Brief Therapy: The Art of Useful Responses | | Room 9 |
| © Elliott Connie - USA | The Solution Focused Approach should be understood as an eloquent dance between the client responses and the professionals questions. This means, the professionals responsibility is to ask questions that are likely to produce client responses that lead towards change. | 45 min |

| | | |
|--|---|------------------------|
| Understanding Teen Eating Disorders: Meeting New Demands for Multifaceted Family Interventions | | Room 10 |
| © Cris Haltom - USA | In the world of complex eating disorders in adolescents, treatment providers are asked to use multifaceted treatment approaches with an emphasis on family support and family interventions. This presentation uses case stories to bring to life factors that inform choosing and using leading evidence-based family treatments for eating disorders. | 45 min |
| First-Generation Indian-American Undergraduates' Grief after Death of Grandparent(s) in India | | Room 7 |
| Ramya Avadhanam - USA | Components during the bereavement process such as loss of expectations, traditions, and culture (Price, 2011) may contribute to mental health challenges for the South Asian population and are often overlooked (Tummala-Narra, 2013). This presentation will include dialogue regarding results from a proposed study presented at IFTA 2016 in Malaga, Spain. | 45 min |
| 14:15-15:00 Workshops (45 min.) | | |
| Cross Over Therapy For Siblings Incest | | Crombie A Suite |
| © Martine Nisse - France Samuel Rassion - France | Siblings Incest is a common form of incest. For minor's safety rights and safety context we recommend to create a multi focal setting with two separate family therapy spaces, until it will be possible to invite entire family. Steps of Cross Over Therapy inspired by systemanalytical approaches will be explained. | 45 min |
| Sensate Focus With Same-Sex Couples | | Room 1 |
| © Natasha Finney - USA | Presenters will provide a historical overview of the sensate focus intervention. Presenters will introduce an adaptation of the intervention for the treatment of same sex couples experiencing sexual issues. Presenters will provide a case application highlighting the utilization of sensate focus with a lesbian couple experiencing sexual issues. | 45 min |
| Improving The Situation For Children By Strengthening The Quality Of Parents Couple Relationships. Colaboration Between Family Counseling Servises And Child Health Centers Provides A Sthrengtened And Earlier Offer To Parents With Yong Children | | Room 2 |
| Marianne Bie - Norway | A pilot project in Norway from 2015-2019 has tried out various forms of cooperation between Family counseling servises and Child health centers to improve secure bases for children. The trial showes very positive results. Marital relationship as a theme. The experiences will be presented. | 45 min |
| Going global: Training sensitive Systemic Therapists in an interconnected world | | Room 3/4 |
| © Deisy Amorin-Woods - Australia | This presentation addresses the pressing need to respect cultural diversity in an increasingly varied and evolving globalised world. This will look at attending to "culture" and integrating "culturally sensitive and responsive" approaches in the training and development of systemic therapists as it applies to education, clinical supervision and service provision. | 45 min |
| How Has L.o.v.e., A Global Leadership Approach, Helped Refugees And Immigrants? | | Room 5 |
| Jacqueline Tome - USA | While working with global executive leaders, Jacqueline Tome created a leadership approach for goal achievement. She has been applying the same concept when working with immigrants and refugees successfully. This interactive workshop will show you how to use the L.O.V.E. model for effective personal and professional goal achievement. | 45 min |
| Only Connect: The Body And Mind, Working Across Contexts | | Room 9 |
| Claire Dempster - United Kingdom Louise Rocks - United Kingdom | The history of western medicine has frequently divided experiences of body and mind, locating both in culturally specific ways. Claire and Louise will be presenting their work, using case and other examples to demonstrate why a Family Therapy approach helps address this dualism and might lead to better outcomes. | 45 min |
| Beyond Victoria Climbíe And Baby P.: Ecological Alternatives To Child Abuse Referral | | Room 10 |
| © Aysha Concepcion-Lizardi - Puerto Rico Luis Raúl Sánchez-Peraza - Puerto Rico | The community based non-profit organization Familias CAPACES Inc., will present its approach for an empathic, trustworthy and responsible child abuse case referral within the family and community contexts. This approach will be proposed as an alternative to prevent the numbness among the health professionals that could lead to children fatalities. | 45 min |
| Brief Strategic Family Therapy: Cognitive, Affective, and Behavioral Change | | Room 7 |
| © Silvia Kaminsky - USA Olga Hervis - USA Jose Szapocznik - USA | Brief Strategic Family Therapy® (BSFT®) is an empirically validated model for treating youth ages 6–18 presenting with externalizing and/or internalizing symptoms. BSFT® is notable as an evidence-based model specifically designed for diverse cultural populations. This workshop will present its systemic, diagnostic and restructuring elements via didactics and videotaped demonstrations. | 45 min |
| The Act of Joining | | Room 8 |
| © Åse Ljungqvist Svantesson - Sweden Gun Drott-Englen - Sweden | It is crucial to be able to make both the baby and the parents, as well as the adolescent and the parents feel confident in therapy. So the act of joining is central all through the therapy. Focus will be on the parallels in the act of joining through childhood and adolescence. Video clips from therapy sessions illustrates our presentation. | 45 min |

15:00-16:00 Closing Refreshment Break

16:00 Congress Ends

Benefits of Membership

JOURNAL OF FAMILY PSYCHOTHERAPY

As a member of IFTA you will receive a subscription to the Journal of Family Psychotherapy. This is the official journal of IFTA and is sent to you electronically as part of your membership fee and is available online.

INTERNATIONAL CONNECTION

The online International Connection newsletter provides you with updates about the organization and additional articles written by members worldwide.

FAMILY THERAPY E-NEWS

A Members Only Research E-News Forum is sent quarterly highlighting research in marriage and family therapy.

WORLD FAMILY THERAPY CONGRESSES

A special World Congress discounted registration fee is available every year for members attending the annual World Family Therapy Congress. Networking is one of the highlights of an IFTA Congress; many 2014 Congress attendees said, 'the best networking congress ever!'

IFTA MEMBERSHIP DIRECTORY

An IFTA Member Directory is available to members only by request.

IFTA and IFTA CONGRESS WEB SITES

IFTA maintains a web site that contains information on upcoming World Family Therapy Congresses, Association information, news, and occasional articles.

Types of Membership

Individual Membership

This membership is for the professional mental health practitioner. Whether you are in a private practice, work for an agency, or would just like to learn more about family therapy from an international perspective. Memberships are available for one, 3 or 5-years with a discount for multiple year memberships.

Student Membership

Student members are currently enrolled in programs leading to a graduate degree or post-graduate certificate in marriage and family therapy or a related mental health field.

Institutional Membership

An institutional membership allows family therapy clinics or hospitals or academic departments to become a member of IFTA. This membership allows up to 3 professionals to be included in the Institution at a discount.

Lifetime Membership

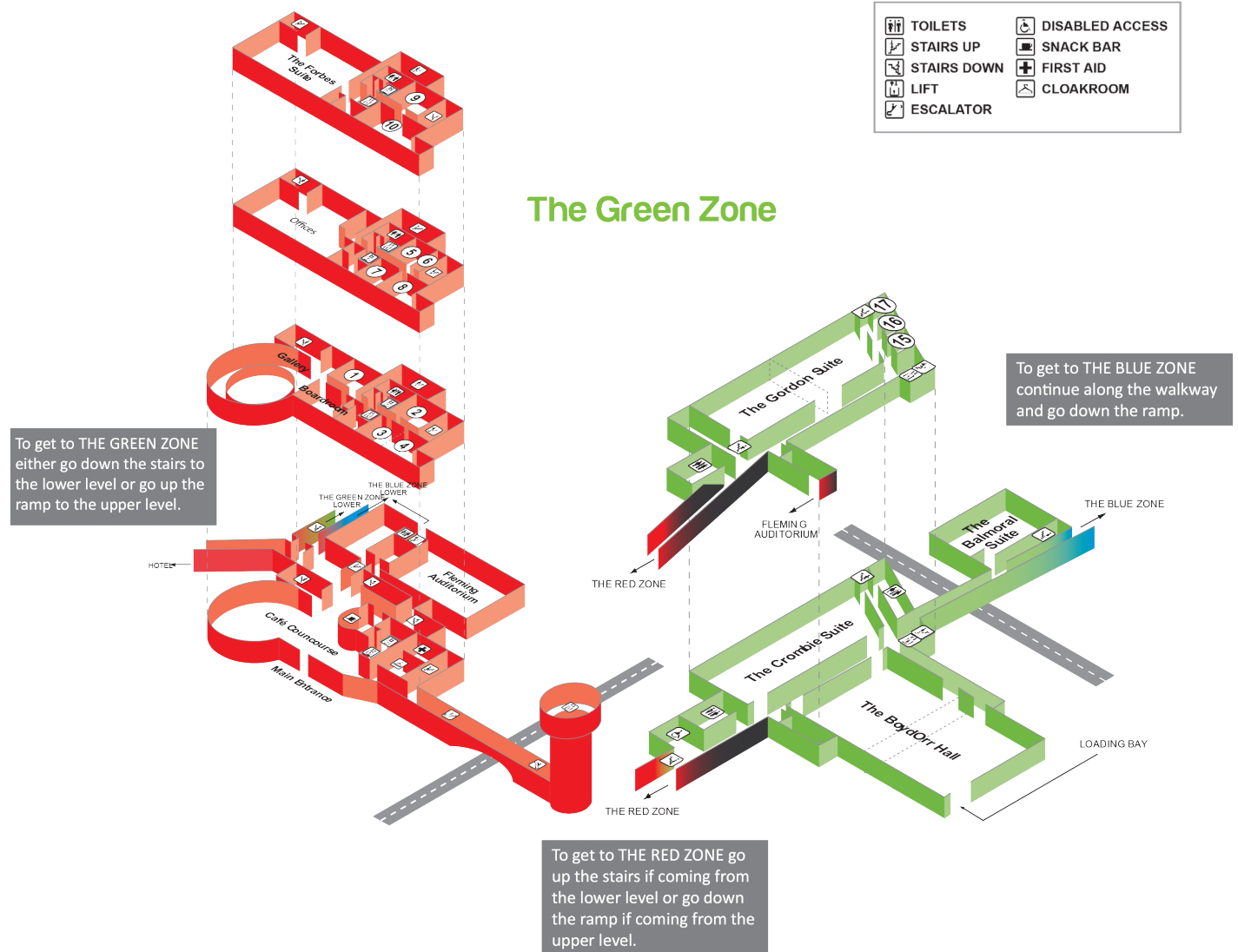
This one time fee of \$1000 provides membership benefits as long as the member desires.

Becoming a Member

You may become a member of IFTA by credit card through the IFTA web site application: <https://www.ifta-familytherapy.com/application/> You may also contact the Secretariat for a fax application form

Map of Aberdeen Exhibit and Convention Centre

The Red Zone



IFTA's Journal of Family Psychotherapy

The Journal is a unique, peer-reviewed journal designed for practicing clinicians as well as academics that offers empirical studies, treatment reports, theoretical discussion, and strategies in clinical practice from family psychotherapy scholars from around the world. The Journal offers empirical studies, program reports, strategies in clinical practice, and theoretical discussions and essays. Additional specialty sections include Family Therapy Around the World, Intervention Interchange, Family Therapy and Mental Health, and Media Reviews. The Journal also regularly publishes special issues on various topics guest-edited by experts in diverse areas of family psychotherapy. The Journal is editorially and administratively managed by IFTA, and published by Taylor & Francis.



The Journal Editor, Christian Jordal, Ph.D., from Drexel University, is in attendance. If you wish to meet him, contact the registration desk.

A free subscription to the Journal is part of membership in IFTA. For more information, contact the IFTA General Secretary: wjhiebert@aol.com.

IFTA Board of Directors, July 1, 2018 – June 30, 2019

IFTA is the professional association for those interested in the field of marriage and family therapy throughout the world. As such, it is the only organization that provides unity for therapists from east to west, respecting traditional approaches and embracing the tradition of tomorrow.

Officers



Warwick Phipps
President
 PhD, South Africa
 (2017-2019)



Joyce Ma
President-Elect
 PhD, Hong Kong
 (2019-2021)



Ruth Casabianca
Past-President
 PhD, Argentina
 (2015-2017)



Anna Low
Recording Secretary
 MSocScc, Singapore
 (2014-2017)



Desiree Seponski
Treasurer
 PhD, USA
 (2016-2018)

Directors-At-Large

2016-2019, Term Ends June 30, 2019

Ozge Alkanat, PhD, Turkey
 Kathlyne Maki-Banmen, MS, Canada
 Anibal Torres, PhD, USA

2017-2020, Term Ends June 30, 2020

Dorothy Becvar, PhD, USA
 Gun Kristina Drott-Englèn, MSW, Sweden
 Jake Johnson, PhD, USA

2018-2021 Term Ends June 30, 2021

Reggie Berger, PhD, Switzerland
 Gloria Baldwin Schultz, MPS, Canada
 Shan Tate, MSA, United Kingdom

Congress Staff



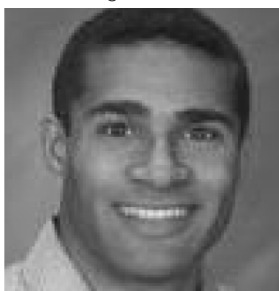
John Lawless
 Program Chair



Doug Tschopp
 Event Manager



William Hiebert
 General Secretary



Fred Jefferson
 Congress CFO



Alyssa Mish
 Event Coordinator



Michelle Renee M. Quinn
 Event Coordinator



2019 Annual Meeting & Open Conference

**Rupture and Repair:
Remaking Relationships in Families and Communities
June 20 – 22, 2019
Oakland Marriott City Center
Oakland, California**

OPEN TO ALL -- CE CREDITS WILL BE OFFERED

Why AFTA?

“The conference is structured for dialogue and intimacy, something you cannot find at other conferences. AFTA feels like home.”

The 41st Annual Meeting and Open Conference will examine how we use our knowledge to address ruptures and repair—in couples, families, communities and in our relationship with the environment and non-human beings, and to devise strategies for creating sustainable change and repair. The recent past in this country has brought tremendous ruptures in relationships at micro and macro levels. As systems thinkers we have important contributions to make relative to the many possibilities to address ruptures and repair—in training, consultation and research settings, as well as in organizations both here and abroad. We must prepare to continue addressing the impact of these ruptures while acknowledging that in the end repair is critical. Ruptures can be opportunities to reconsider our views and behavior, and to strengthen relationships.

Keynote Speaker:

- Vikki Reynolds, PhD, RCC

Plenary Speakers include:

- Melanie Domenech Rodriguez, PhD
- Chris Hoff, PhD, LMFT
- Sarah Stearns, PhD
- Jill Freedman, MSW
- Tileah Drahm-Butler, MSW

For more information, go to our website, <http://www.afta.org/conferences> or contact the AFTA Office at (910) 378-4601 or afta@afta.org.

International Accreditation Commission for Systemic Therapy Education

Created as a semi-autonomous body under the auspices of the International Family Therapy Association (IFTA), the International Accreditation Commission for Systemic Therapy Education (IACSTE) focuses on the development and implementation of quality standards for programs around the world that provide systemic therapy education and training. These standards are created to enhance the development of professionals who will be qualified to provide systemic therapy for individuals, couples, and families in the communities in which they live and work. Both Tier 1 (Primary) and Tier 2 (Advanced) sets of standards were created to enhance the development of professionals who will be qualified to provide systemic therapy for individuals, couples, and families in the communities in which they live and work.

More information about accreditation can be obtained at the Saturday Workshop, March 30 at 9:30 AM. The Standards and Application for accreditation are available at: <http://www.ifta-familytherapy.org/MFTaccreditation.html>

Congress Loyalty Discount Registration Rate

If you are attending this 2019 World Family Therapy Congress, you are able to register for the 2020 World Congress in Basel, Switzerland at a special price of \$525.

Stop by the IFTA Registration desk and we will help you register at the special price. This price is good only until Saturday, March 30! THIS WEEK ONLY!



satir institute
of the pacific
be inspired

Transformational Systemic Therapy Using the Satir Model

10 day Summer Intensive Training Programs

Level 1 August 1 - 10, 2019

Level 2 July 10 - 19, 2019

*Where: Bethlehem Retreat Center 2371
Arbott Road, Nanaimo, BC, Canada*

*Learn and experience Transformational Systemic Therapy developed from the
teachings of Virginia Satir*

60 hours of Approved Continuing Education Credits
Available from Canadian Counselling and
Psychotherapy Association

Register :
admin@satirpacific.org
1-604-634-0572

Explore training and program opportunities at WWW.SATIRPACIFIC.ORG

2020 World Family Therapy Congress

Basel, Switzerland

March 12 - 14, 2020



The 2020 World Family Therapy Congress of the International Family Therapy Association will be held in Basel, Switzerland. We invite you to join colleagues from around the world.

Like all IFTA Congresses, it will feature many approaches to a variety of problems and ways of coping with them. The congress aims to help heal hurting couples and families in various cultures.

Call for Proposals: OPEN NOW UNTIL September 30th

Proposals are sought for the in the following categories:

- Brief Presentation (20 minutes)
- Lectures/workshops (45 minutes)

Students

Students must send proof of student status (scan of student ID) to info@ifta-congress.org to receive a Promo code in order to register as a student



The Official Language

of the meeting is English. All abstract submissions must be in English.

Proposal Information:

<http://ifta-congress.org/docs/GeneralGuidelines.pdf>
<http://ifta-congress.org/docs/StudentGuidlines.pdf>

Submit a Proposal:

www.ifta-conference.org

