

# IFTA World Family Therapy Congress

Technology, Families & Effective Therapy

## Panama City, Panama





# Plenary Speakers

---



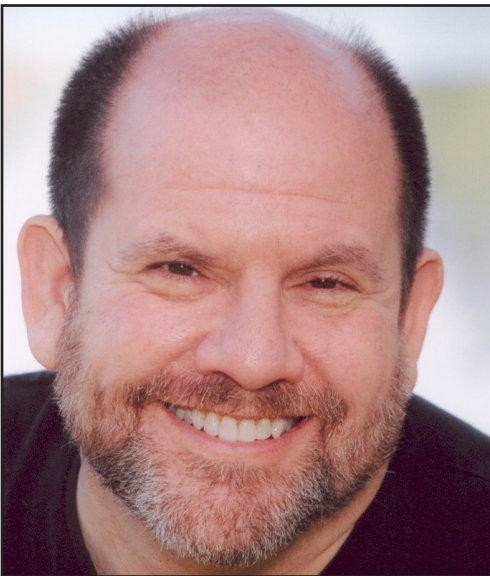
## **Gonzalo Bacigalupe, EdD, MPH**

Plenary Session: **Thursday, March 6, 2014 | 10:45-12:15**

### **Emerging Technologies, Families, and Psychotherapy: Beyond Control & Toward Curiosity**

"Information technologies are an unavoidable and often indispensable dimension of our family and community life. Families communicate and engage through the use of an evolving set of emerging technologies. The adoption of these technologies, however, tests our ability as psychotherapists and citizens to understand how families are embracing and challenged by them. In this presentation, I explore some of the challenges and critique the usual discourse about technology that changes from a nostalgic assessment of family life without them to the utopian idea that these technologies will help us to resolve quickly some difficult social dilemmas. The talk is based on a critical review of the literature, my own empirical research on the impact of technology, and clinical situations in which technology is protagonist of family difficulties and therapeutic work. Questions I intend to answer include: What are the untapped opportunities for therapeutic interventions that embrace technology in the therapy session? How do we frame our conversations about technology in ways that invite collaboration rather than diagnostic labels or the need for control?"

---



## **Stan Tatkin, PsyD**

Plenary Session: **Friday, March 7, 2014 | 11:15-12:45**

### **Wired for Love: A Psychobiological Approach to Couples**

Developer of A Psychobiological Approach to Couple Therapy® (PACT), and author of *Wired for Love: How Understanding Your Partner's Brain and Attachment Style Can Help You Defuse Conflict and Build a Secure Relationship*, Tatkin will provide a brief introduction to the PACT approach to couple therapy. A bottomup, body oriented method for working with implicit memory systems in primary attachment relationships. The presentation will focus on the importance of using somatoaffective techniques for discovering and treating problems related to attachment history, arousal dysregulation, and social-emotional deficits. Clinical video examples that demonstrate methods for accessing nonverbal information implicit in microexpressions and micromovements and for effectively using that information in the therapy session will be provided.

---



## **Janine Roberts, PhD & Merli Lopez Rodriguez**

Plenary Session: **Saturday, March 8, 2014 | 10:45-12:45**

### **Systemic Therapy with Families and Children Working in the Streets in Ecuador and Mexico**

Over the last twenty years, two JUCONI (Together with the Children) centers have developed and very successfully implemented a four-stage framework for working with marginalized and excluded families. They break multigenerational cycles of poverty and lack of access to education and get kids off the streets and back in school. The clinical leader from JUCONI Ecuador (Merli López Rodríguez) will explicate these four stages as well as creative strategies for engaging families in therapeutic work. Janine Roberts, who has trained therapists for both JUCONI Ecuador and JUCONI Mexico for over a decade will describe key processes in entering organizations to do trainings including: shadowing staff, delivering topics on demand, moving in and out of the role of facilitator and participant, entering into the trainings from different vantage points within an organization, and designing activities with an eye to how they will impact work relationships of staff and clients.

---

# **IFTA's**

## **XXII World Family Therapy Congress**

Technology, Families  
& Effective Therapy

**Panama City, Panama**  
March 5-8, 2014



**International Family  
Therapy Association**

IFTA, working in a collaborative spirit with other professionals and organizations around the world who share its mission, also promotes continuing education in the development of quality standards for marriage and family therapy for professionals performing family therapy in order that they may better assist families in the communities in which they serve.

# Program at a Glance

## Tuesday March 4, 2014

16:00 - 18:00 Registration for Pre-Congress

## Wednesday March 5, 2014

08:00 - 10:00 Registration for Pre-Congress

13:00 - 18:00 Registration for Congress

09:00 - 16:00 Pre-Congress Workshop:  
**Intensive Family Therapy Courses:**

*- Introduction to Family Therapy*

*- Tatkin PACT Model*

16:30 - 17:30 Student Networking Meeting: Discover IFTA

15:00 - 18:00 Executive Committee

17:30 - 18:30 Opening Session

18:30 - 20:00 Opening Dinner

20:00 - 21:00 Welcome Reception

## Thursday March 6, 2014

07:30-17:30 Registration Hours

08:30-9:30 Brief sessions

9:45-10:30 Presentations

10:30-10:45 Recess/Break

10:45-12:15 Plenary Session:

**Gonzalo Bacigalupe, EdD, MPH**

*Emerging Technologies, Family & Psychotherapy:*

*Beyond Control & Toward Curiosity.*

12:15-13:15 Lunch Break

13:15-14:00 Presentations/workshops

14:15-15:00 Presentations/workshops

15:00-15:30 Refreshment Break

15:30-19:00 IFTA Board of Directors

15:30-16:15 Presentations/workshops

16:30-17:30 Presentations/workshops

17:45-18:45 Presentations/workshops

## Friday March 7, 2014

07:30-16:30	Registration Hours
08:30-10:00	Brief Sessions
09:00-17:00	Posters Displayed all Day
10:15-11:00	Presentations/workshops
11:00-11:15	Recess/Break
11:15-12:45	Plenary Session: <b>Stan Tatkin, PsyD</b> <i>Wired for Love:</i> <i>A Psychobiological Approach to Couples</i>
12:45-14:00	Lunch
13:30-14:30	Poster Session
14:30-15:15	Presentations/workshops
15:30-16:15	Presentations/workshops
16:15-16:45	Refreshment Break
16:45-17:30	Presentations/workshops
17:45-18:45	Presentations/workshops
19:30-21:30	Congress Event

## Saturday March 8, 2014

08:00-15:00	Registration Hours
9:00-10:00	Presentations/workshops
10:15-11:00	Presentations/workshops
11:00-11:15	Recess/Break
11:15-12:45	Plenary Session: <b>Janine Roberts, PhD &amp; Merli Lopez Rodriguez</b> <i>Systemic Therapy with Families and Children Working in the Streets in Ecuador and Mexico</i>
12:45-14:00	Lunch
14:00-15:00	Presentations/workshops
15:15-16:15	Presentations/workshops
16:15-16:45	Congress Closing
16:45-17:15	Closing Refreshments

**17:00 (5:00 PM) Congress Ends**

### **Congress Loyalty Discount Registration Rate**

If you are attending this 22nd World Family Therapy Congress, you are able to register for the 2015 World Congress in Kuala Lumpur, Malaysia at a special price of \$350 (plus tax).

Stop by the IFTA Registration desk and we will assist you in registering at this special price. This price is good only until Sunday, March 9! THIS WEEK!

## Wednesday, March 5th

9:00 - 16:00 - IFTA Pre-Congress Intensive Courses	Room
PACT Model - Stan Tatkin	Fania 4
<b>16:30 - 17:30 - Student Networking Meeting: Discover IFTA</b>	Fania 4
<b>17:30 - 18:00 - Opening Session</b>	Fania 1
<b>18:30 - 20:00 - Opening Dinner</b>	Bazaar Restaurant
<b>20:00 - 21:00 Welcome Reception</b>	62nd Floor Bar

## Thursday, March 6th

8:30 Briefs (2 consecutive 25 minute presentations)	Room
<b>Becoming more curious about the other</b> <i>Elena Ceuca</i>	Fania 4
The presentation aims to challenge reflections about improving therapeutic practice through enhancing the therapist's self-awareness on his/hers world view. There will be presented a training technique created to increase self-awareness. This technique is based on the experiential approach, on systemic thinking and on dialogic perspective.	
<b>The Attractiveness of Family Telephone Counseling in Saudi Arabia: An Empirical Investigation of Client</b> <i>Mansour Aldehaiman</i>	Fania 4
Telephone counseling has been evolving in the Kingdom of Saudi Arabia in the past decade. The early use of the telephone for counseling was limited to Crisis intervention in medical settings. The purpose of this study was to discover what features of telephone counseling clients found attractive.	
<b>Using Psychoeducational Approach among Israeli Prisoners to Enhance Marital Relations</b> <i>Zeev Appel</i>	Fania 6
Incarceration of a family member is a traumatic event . One approach to ameliorate such a trauma and reintegrate a prisoner into his family Is through a marriage enrichment intervention. The paper describes the implementation of program for prisoners . The finding indicates improved intimacy.	
<b>The role of attachment to parental and romantic figures on couples' fear of intimacy</b> <i>Maria Pedro Sobral</i>	Fania 6
This dyadic study showed influences of the quality of early mother-attachment and the attachment anxiety of the partner on fear of intimacy, for men and women. It stretches therefore the importance of considering relationships with both mothers and romantic partners in counseling with couples with fear of intimacy.	
<b>Cyberbullying: Parents' knowledge, perceptions and coping</b> <i>Tali Heiman</i> <i>Dorit Olenik Shemesh</i>	Verve
Cyberbullying refers to bullying harassment by electronic technologies. The present study examined parents' knowledge, perceptions and coping regarding the involvement in cyberbullying and cybervictimization of their children. Social and family support was negative correlated with cyber-perpetrators; being a cybervictim was related to the child's stress, anxiety, and depression.	
<b>Technology and supervision for international MFTs: Exchanging cross-cultural knowledge</b> <i>Asmaa Alotaiby</i> <i>Brittany Robinson</i>	Verve
Increases in technology challenge the limitations of the distribution of knowledge across the globe. International Marriage and Family supervisees wish to build and maintain supervision to foster multicultural competency and global awareness. International MFTs need to utilize technology as an element of their supervision experience for success and innovation.	
<b>Terapia Familiar desde una Perspectiva Postcolonial (Spanish Room)</b> <i>Romulo Esteban Montilla</i>	Sun
En esta presentación se analizará la familia desde una perspectiva postcolonial y se hará una propuesta de terapia familiar que incorpore los elementos de un abordaje liberador. Una terapia familiar postcolonial comienza con el reconocimiento de la necesidad central del ser humano de formar grupos para vivir en comunidad.	
<b>Needs, Expectations And Dreams Of Men Who Abuse Their Partners (Spanish Room)</b> <i>Argelia Medina</i>	Sun
Research identify the needs, expectations and dreams of men and their relationship between dissatisfaction and the emergence and maintenance of verbal and physical masculine maltreatment.	
<b>Engaging Differences: Race, LGBT, and Spirituality in a MFT Training Program</b> <i>Suzanne Coyle</i>	Arista
Respect for racial ethnicity and sexual orientation challenges today's family therapist. Further, spiritualities of therapist and family can both help and hinder this therapeutic progress. This presentation outlines the methodologies of curriculum and clinical supervision in a MFT program that endeavors to prepare its graduates for such challenges.	
<b>Utilizing Constructivist Therapy/Mediation for Policy Mediation (and vice versa)</b> <i>Christian Palm</i>	Arista
Our information technology society is extremely individualized and uncertain, which leads to many policy conflicts. In this presentation insights from constructivist family therapy and mediation are utilized for policy mediation. An enriched mediation is illustrated in case of controversies of a multi-actor policy formulation against domestic violence.	
<b>Cultural Perspectives on Family Therapy Education</b> <i>Isha Williams</i>	Island
Family therapy education will be presented from two different cultural perspectives. One presenter is an American who has taught and provided supervision to MFT students in Romania and the US, while the second presenter is Romanian who has taught and provided supervision to MFT students in South Africa and Romania	
<b>How Attachment Style Influences the Patient-Physician Relationship and Health Outcomes</b> <i>Michele Smith</i>	Island
Trust is an important component of successful patient-physician relationships and promotes positive implications for treatment outcomes. Attachment style affects the way a person perceives trustworthiness and interacts within interpersonal relationships. This presentation reviews how attachment styles affect patient trust and interactions with healthcare providers. Clinical implications will be discussed	



<b>9:45 Presentations (45 Minutes)</b>		<b>Room</b>
<b>Emotional Resiliency-A Family Challenge</b>		Fania 4
<i>Gene Gardino</i>	The life of children often includes struggle, trauma, and pressure in their developmental trajectory. Parents tend to minimize the subsequent pain and pressure, instead focusing on wrapping the child in a protective bubble, denying opportunities for crucial emotional resiliency to develop.	
<b>Societal Regression &amp; Sublime Differentiation</b>		Fania 5
<i>Henry Warnock</i>	The phenomenological 'Sublime', entailing awe and fear, was developed in Burke, and Kant, and the Romantics. Postmodernism has returned the Sublime, with massive technologies beyond control. We will compare 'the Sublime' to Bowen's theories of differentiation, and societal regression; at play are anxiety, subject, object, ideal, and rejection.	
<b>Current Eating Disorder Technological Research and Treatment Implications</b>		Fania 6
<i>Rebecca Cooper</i>	This presentation will provide participants with the current technological research about the international epidemic of eating disorders. Participants will be able to assess patients for food related mood disorders, eating disorders or food addictions. Methods of treatment will also be discussed.	
<b>Teaching Parents Mindfulness: A Systematic Review of Research</b>		Verve
<i>Jenna Scott</i>	Preliminary research suggests that mindfulness-based parenting interventions may improve family functioning. This presentation aims to advance family therapists' understanding of mindfulness-based parent training interventions by synthesizing the existing research, engaging attendees in the practice of mindfulness, and providing implications and recommendations for clinical practice.	
<b>Effectiveness of Marriage and Relationship Education (MRE) (Spanish Room)</b>		Sun
<i>Angelica Khorram</i>	The overall intention of facilitating a couple's workshop is to teach the couple new ways of interacting that can encourage healthier relationship dynamics. The goal of this presentation is to begin discussing how marriage and relationship education (MRE) programs can be more effective.	
<i>Angel Eduardo Estrada</i>		
<i>Pescador</i>		
<b>Being Transparent about Having A Trans-Parent: Experiences of Children of Transgender Parents</b>		Arista
<i>Deb Coolhart</i>	This lecture presents findings from qualitative research interviewing children of transgender parents about experiences during parents' gender transition. Children's feelings about parents' gender transition, parent-child relationship dynamics, functioning of parental subsystems, challenges and resiliencies in children's adaptation to the gender transition, and clinical implications will be discussed.	
<b>The Uninvited Guest: Multiple Sclerosis Challenges for Family Management</b>		Island
<i>Michele Smith</i>	Chronic illness in a parent presents unique challenges to family homeostasis. One means families utilize to achieve stability is having children assume parental responsibilities. The change in roles presents both opportunities and challenges for the child. This presentation will describe types of parentification and interventions to strengthen the family.	
<i>Robert Godsall</i>		
<b>10:30-10:45 Refreshment Break</b>		
<b>10:45 - 12:15 Plenary</b>		
<b>Emerging Technologies, Family &amp; Psychotherapy: Beyond Control &amp; Toward Curiosity</b>		<b>Room</b>
<i>Gonzalo Bacigalupe, EdD, MPH</i>	What are the untapped opportunities for therapeutic interventions that embrace technology in the session? How do we frame our conversations about technology in ways that invite collaboration and curiosity rather than diagnostic labels or the need for control?	Fania 1
<b>12:15-13:15 Lunch Break</b>		
<b>13:15 Presentations (45 Minutes)</b>		<b>Room</b>
<b>The Power of Healing Through Pure Connection-Assisting Refugees</b>		Fania 4
<i>Annette BoVee-Akyurek</i>	The presenter will share experiences with refugees in Istanbul, Turkey, with intentions to connect and facilitate awareness of one's inner being and strength. This assists refugees in being heard, intention to "return to self", increasing power and strength to move forward in their lives, with a sense	
<b>Brain Based Couple Therapy</b>		Fania 5
<i>Edward Chan</i>	This paper proposes a model to help therapist facilitate difficulties encountered by couple during conflict which other couple therapeutic model such as that by Goldman (Goldman, 2008) had tried to resolve by avoiding the conflict created by couple's confrontation. The model utilized facilitation by brain based understanding and states.	
<b>Anxieties in children from a systemic/integrative approach: an evidence-based Brief therapy</b>		Fania 6
<i>Ruth Casabianca</i>	Inspired on the Mental Research Institute of Palo Alto's principles this workshop will present a brief and integrative therapy to treat anxieties in children as well as this therapy's effectiveness.	
<b>Internet Infidelity: How does it start and how can it be treated?</b>		Verve
<i>Angel Eduardo Estrada</i>	Given the impact technology has on relationships, there's a growing body of research on how the different mediums of technology can promote infidelity in couples. Few studies explore treatment of internet infidelity; therefore, this workshop will delineate behaviors surrounding internet infidelity and explore implementation of Gottman couple therapy model.	
<i>Pescador</i>		
<i>Shannon Zorn</i>		
<b>Migración del Modelo Dinámico Sistémico Integrativo, desarrollado en la capital del país a poblaciones en el interior de la República Mexicana. con múltiples problemáticas psico-sociales (Spanish Room)</b>		Sun
<i>María Enriqueta Cordova Barrios</i>	Necesidad de atención a familias en crisis ubicada en Morelia, México que han sido altamente afectadas por violencia, delincuencia organizada, corrupción, desempleo y desintegración familiar.	
<i>Emma Espejel Aco</i>	Presentando un modelo, su adaptación y resultados durante la formación de Terapeutas Familiares en diferentes sedes clínicas.	
<b>A 'Divorced' Case--a drastic measure of self defense</b>		Arista
<i>Susanna Wong Ip</i>	This presentation discusses how traumatic experience blocks relationship development.	
<i>Eddie, Tat Chan</i>	Vulnerability, a good opportunity for bonding may be misunderstood and trigger the reaction of the automatic system that defies rational and logical thinking.	

<b>International Perspectives On Trauma And Resiliency</b>		Island
<i>John Miller</i>	Trauma and its effects are an issue throughout the world. This presentation will explore how to conceptualize and promote resilience from a global perspective, including novel and indigenous ways of healing. Various methods from cultures such as those in Southeast Asia, China, and Mexico will be explored.	
<i>Jason Platt</i>		

**14:15 Presentations (45 Minutes)**

		<b>Room</b>
<b>Techniques for Working with Couples Impacted by Addiction</b>		Fania 4
<i>Amy Williams</i>	This session will provide specific techniques for engaging couples in exploring the impact of addiction on their relationship. The use of genograms, structural family diagrams, timelines, and letter writing will be explored as techniques for encouraging conversations around the impact of addiction and for framing conversations focused on change.	
<b>Technology and Media Desensitization on the Grieving Process and Emotions of Children</b>		Fania 5
<i>Nika Alakbarova</i>	Technology has become ubiquitous in children's communication and experiences. Pervasive Internet and electronic use limits children's ability to distinguish emotions and develop irreversibility, as it relates to death. This may restrict their ability to grieve, connect with others and develop healthy attachments.	
<b>The Use of Mediation Technologies in High-Conflict Parental Separation or Divorce: Innovative and Affordable</b>		Fania 6
<i>Stephanie Garrett</i>	The primary purpose of the presentation is to inform behavioral health professionals about innovative, affordable technologies designed to enable high-conflict couples to co-parent efficiently and effectively.	
<i>Allie Parker</i>		
<b>Nurturing spirit in an age of technology: The practice of genuine meeting</b>		Verve
<i>Janet Stauffer</i>	"Faster," "productive," "connected," "brief" are hallmark icons of our era. We risk missing the human spirit deeply present to another in time and place. This interactive workshop will explore how technology can serve human becoming or truncate human existence dependent on how we care for the interhuman dimension.	
<b>In the realm of hungry ghosts: spirituality practices in recovery (Spanish Room)</b>		Sun
<i>Timothy Dwyer</i>	Some say that addicts are on a spiritual calling but show up at the wrong address.	
<i>Carlos Leiro</i>	Contextual/disease models of addiction provide a way to conceptualize patterns and processes of compulsive behavior and 'use'. This workshop centers on integration of spiritual technology in the recovery from addictions and compulsive behaviors.	
<b>The Use of Technology in Working with Rural Families in America: Strengths and Challenges</b>		Arista
<i>Emmerentie Oliphant</i>	Technological resources can be used to provide rural families in America access to family therapy.	
<i>Kathleen Belanger</i>	The presentation will use three different case studies to illustrate the use of technology in terms of barriers and strengths. Guidelines on how to use technology in an effective and ethical way will be presented.	
<b>Interpersonal Fatigue</b>		Island
<i>Daniel Mendel</i>	Interpersonal Fatigue (IF) is the depletion of one's capacity to relate to and communicate with other people due to an overload of interpersonal activity. Psychotherapy requires constant use of interpersonal skills. New technologies create new interpersonal dynamics. Without awareness and self-care, IF can negatively affect one's life.	
<i>John Miller</i>		

**15:00-15:30 Refreshment Break**

**15:30 Presentations (45 Minutes)**

		<b>Room</b>
<b>CCOPL: Online Intervention for Couples Regarding Reproductive Decisions</b>		Fania 4
<i>Nicole Massey-Hastings</i>	CCOPL assists couples in deciding to become parents or not by asking them to assess their relationship, motivations for having children, and the costs and rewards associated with becoming parents. The intervention is preventative and is being developed to be offered internationally through a self-paced online/webinar format.	
<i>Mudita Rastogi</i>		
<b>Re-visioning Latinos in Family Therapy</b>		Fania 5
<i>Yajaira S. Curriel</i>	This workshop will discuss how Latinos are represented in current CFT literature. We'll address ways to broaden our understanding of Latinos and highlight the diversity that exists within the community. Strategies to improve culturally sensitive family therapy with Latinos will be highlighted.	
<b>Training Chaplains as Family Therapists</b>		Fania 6
<i>Jeffrey White</i>	This presentation will describe the unique challenges and opportunities that chaplains face in providing marriage and family therapy to their clients.	
<b>Multi-family group intervention for Chinese families of a child with attention deficit hyperactivity disorders in Hong</b>		Verve
<i>Joyce Lai Chong Ma</i>	In this presentation, the authors will report on our experience of developing a culturally specific and socially relevant model of multi-family group intervention for the families of a child with attention deficit hyperactivity disorders based on the feedback of the families and the children.	
<b>An Overview of the Field of Clinical Sexology (Spanish Room)</b>		Sun
<i>Rafael Fuentes</i>	To obtain an overview of the historical perspective of sexology and comprehend the psychosocial perspective in the field of clinical sexology.	
<b>Working with couples and trauma in remote northern Canadian communities.</b>		Arista
<i>Gloria Baldwin Schultz</i>	Many First Nation, Inuit and Metis people have been impacted by removal from their families to attend residential schools where they experienced abuse. This interactive workshop will explore the challenges of working with people with significant human traumas in remote communities of Northern Canada within a multi-cultural context.	
<i>Romeo Beatch</i>		
<b>Choose Your Own Outcome: A Creative Approach to "Predicting" Outcomes in Family Therapy</b>		Island
<i>Pamela Harris</i>	This session will introduce a new software application designed to discover family interactional patterns through a creative approach that encourages deeper child/family engagement. Families will be presented with culturally sensitive, interactive, moral dilemma scenarios related to referral behavior, and work together to decide the main character's actions.	
<i>Rebecca Sheffield</i>		



<b>16:30 Presentations (60 Minutes)</b>		<b>Room</b>
<b>Opening up Conversations on Emerging Technology with Families</b> <i>Yudum Akyil</i> <i>Gonzalo Bacigalupe</i>	In this interactive workshop we will demonstrate a reflecting team model with families conversing about the impact of emerging technology on their family process. The participants will take active roles in being members of the team and processing the conversation that the interviewer will have with the families.	Fania 4
<b>Authoring Stories of Resilience: Guidelines for Practice</b> <i>William Scott</i>	The collaborative, relational therapist as an audience to clients' stories empowers them to become authorities, and more involved in the construction of their own stories. In this workshop guidelines for a therapeutic stance, and key elements for reauthored stories will be presented, while participants are invited to explore additional resiliencies.	Fania 5
<b>ARISE Model for Adolescents &amp; Young Adults with Substance Abuse and Mental Health Issues</b> <i>Judith Landau</i>	Youth substance abuse is correlated with increased likelihood of lasting addiction and mental health issues. Targeting this high-risk population is therefore crucial for addiction prevention. This workshop focuses on working effectively with this population and their unique needs, complicating mental health issues, and the need for intensive family involvement.	Fania 6
<b>Advancing couples towards equality</b> <i>Yona Bressler</i>	Lack of equality is viewed as a major element in couples distress. Couples have many problems unrecognized as relating to lack of equality. Using a model of equity presented in "Rabin.C. Equal Partner: Good Friends (Routledge) this workshop will show how couples distress is reduced as equality is increased.	Verve
<b>A Clinical Doctorate for the Global Village: Intercultural and Communitarian Approaches (Spanish Room)</b> <i>John Southern</i> <i>Romulo Esteban Montilla</i>  <i>Fangzhou Yu</i>	This program describes the evolution of an international doctorate in family therapy. Intercultural and communitarian approaches encourage dialogue and post-colonial treatment perspectives. The clinical doctoral program emphasizes technology applications, specialization development, and action research. The doctorate balances clinical specialization with community service and social justice.	Sun
<b>Healthcare Reform in U.S. and Around the World: Challenges and Impact on the Field of MFT</b> <i>Marcia Michaels</i> <i>Linna Wang</i>	International healthcare reform is creating a paradigm shift; changing from primarily physical health and treatment focused to integrative and prevention focused. A reexamination and reconfiguration of MFT's training, function, and competencies is merited. MFTs need to connect with colleagues from countries where integrative care system is being implemented.	Arista
<b>Clinical Application of Attachment Theory in PACT Couple Therapy</b> <i>Stan Tatkin</i>	This PACT workshop will focus on attachment theory which, by itself, presents significant challenges to long-term adult romantic relationships. Through lecture, demonstration, and a panel presentation of PACT approach clinical video examples of couples, the audience will learn how to work with matters of attachment in adult primary relationships.	Island
<b>17:45 Presentations (60 Minutes)</b>		
<b>Betrayed By Technology: Coaching Long Distance Couples to Keep It Together While Apart</b> <i>Harriet Cannon</i>	Maria's in Singapore. John, in London, posts a video of their daughter's first steps. Maria logs on and finds she's seeing this momentous occasion after everyone else. We introduce the Culturegram, a tool that reveals learned cultural expectations, and discuss coaching couples on staying connected while apart.	Fania 4
<b>Working Effectively with Third Culture Families</b> <i>Jacqueline Tome</i>	TCF develop unique characteristics due to their relocation experience. With this workshop you will learn about differences between refugees, immigrants, expats and third culture families; developmental differences while adjusting into a new culture; and effective techniques, presented on a movie with clients from different cultures.	Fania 5
<b>Person-of-the-Therapist Training (POTT): Principles, Professional Benefits and Applications</b> <i>Alba Nino</i> <i>Karni Kissil</i>	This workshop will present Harry Aponte's Person-of-the-Therapist Training (POTT) model. Through lecture, vignettes and exercises, participants will learn about the POTT model and training program, the professional gains reported by previous trainees, and ways to use this training model with themselves or their supervisees/trainees.	Fania 6
<b>The Use of Self of the Therapist</b> <i>Kathlyne Maki-Banmen</i>	When the therapeutic process taps the universal yearnings and spiritual essence of individuals within their personal family and social systems, transformational change is facilitated within the intrapsychic and interactive systems. The five essential responsibilities of the therapist will be discussed and a brief therapy demonstration will be presented.	Verve
<b>Tips for Getting Published in Journals</b> <i>William Nichols</i>	This workshop presentation furnishes useful tips and guidance in getting published in journals, whether you are a clinician, academician, or graduate student.	Arista
<b>Clinical Application of Regulation Theory in PACT Couple Therapy</b> <i>Stan Tatkin</i>	Pact workshop with focus on the psychological approach to couple therapy, which presents perhaps the most significant challenge to long-term romantic relationships. Through lecture, demonstration, and panel presentation of PACT approach clinical video examples of couples, the audience will learn how to work on arousal regulation issues with couples.	Island

**Friday, March 7th**

**8:30 Briefs (3 consecutive 25 minute presentations)**

		<b>Room</b>
<b>Couples Therapy with Parents of Children who Have Autism</b> <i>Laura Marshak</i>	This presentation focuses on working on relationship issues with couples raising children with autism. It draws upon research and clinical experience in order to address couples issues such as conflicts due to reactions to diagnosis, divergent expectations, denial, isolation, depletion, rigid role definitions and logistical constraints on intimacy.	Fania 4
<b>Family adaptation to childhood disability : cross cultural commonalities</b> <i>Laura Marshak</i>	Some commonalities in how families adjust to childhood disability are presented along with a cross-cultural model facilitating coping with childhood disability or illness. Clinical examples and Wright's succumbing-coping framework will be illustrated with comments from parents of children with developmental disabilities in India and the United States.	Fania 4
<b>Substance Use Disorders in the LGBTQ Community: Prevalence, Etiology, and Treatment</b> <i>David Bowers</i>	Increased recognition of same-sex relationships offers Family Therapy a new opportunity to bring its unique perspective forward in assisting this population. This presentation provides a detailed review of current substance use disorder prevalence, unique issues and treatment concerns for professionals concerned about chemically dependent LGBTQ persons.	Fania 4
<b>Using Simulated Learning Environments to Test Clinical Readiness of CFT Master's Students</b> <i>Christian Jordal</i>	The Couple and Family Therapy Department at Drexel University uses a Simulated Learning Environment to test the clinical readiness and development of graduate students across the program. Measurements are tied to clinical student learning outcomes. The application of SLE to CFT, including challenges, opportunities, and implications, will be discussed.	Fania 5
<b>Mothers' Narratives of Trauma</b> <i>Stephen Coulter</i>	This presentation will report the findings of an exploratory study of how ten mothers narrated the impact of trauma. The Narrative Interviews were subject to thematic analysis. The results call into question an approach that focuses primarily on individual's PTSD-type symptoms and supports a broader systemic approach.	Fania 5
<b>A Measurement of Bowen's Concept "Differentiation of Self" and its Clinical Application</b> <i>Zeev Appel</i>	Bowen's concept of "differentiation of self" is an important aspect in family therapy. The present paper describes an inventory for measuring level of differentiation for each member of a married couple. The paper demonstrates the clinical usage of the inventory in evaluating the marriage quality of life.	Fania 5
<b>The cross cultural application of forgiveness therapy: Dilemmas, challenges and preliminary findings of a clinical</b> <i>Itzhak Lander</i>	The paper introduces forgiveness therapy and reports on a clinical research study that utilized Dibble's family forgiveness model with 10 Israeli Bedouin-Arab families with a history of child maltreatment. Dilemmas related to family forgiveness therapy with this unique population are highlighted. Preliminary findings of the research are presented.	Fania 6
<b>Narratives of clients from Family Therapy Failures</b> <i>Joana Sequeira</i> <i>Neusa Patuleia</i> <i>Isabel Alberto</i>	A qualitative analysis of clients' narratives from therapeutic failures allowed identification of the aspects (narrative structure and processes) that block change in therapy. Clients' narratives remain static, blocked in past or present and present a linear causality. Problems that brought family to therapy are the central issue of sessions.	Fania 6
<b>Therapeutic Intervention Protocol in Child-to-Parent Violence, featuring an Adolescent in Residential Care</b> <i>Neusa Patuleia</i> <i>Isabel Alberto</i>	In an ecosystemic perspective our protocol integrates intervention in different socio-therapeutic levels, focusing on all areas of teenager's life, based in the familiar therapeutic intervention, throughout individual and socio-educational therapeutic intervention.	Fania 6
<b>Religious Discrimination and Race-Related Stress Among North American Sikhs</b> <i>Kiran Shahreen Kaur</i> <i>Arora</i>	Sikhs in North America have historical and continuous experiences of discrimination, which heightened after the events of 9/11. This study examined the trauma of religious discrimination and race-related stress among North American Sikhs. Results provide a more holistic view of the experiences of discrimination that Sikhs continually face.	Verve
<b>Family Therapy: Is There Such a Thing?</b> <i>Warwick Phipps</i>	The original term "family therapy" confused two logical levels; the approach—the systems approach—with the application of that approach—the family. Such confusion resulted in a range of disparate approaches. Although there is a systems approach to working with families, there is no such thing as family therapy.	Verve
<b>Outsourcing Strategies Workshop, visualization and imagery for pain: An approach based on Narrative Therapy M.</b> <i>Perez Sanchez Lucia</i>	The following paper is intended to present the objectives and procedures of a workshop for pain management based on the model developed by M. Narrative White and D. Epsom, in which colorful pictorial language, metaphorically charged by the central role of treatment raised here.	Verve
<b>Collaborative Net-Therapy: A Clinical Intervention (Portuguese Room)</b> <i>Lucelene Barbin</i> <i>Rosa Maria Macedo</i>	A social intervention with the "Collaborative –Net Therapy" method involving residents in rehab, family members and persons of the community. The aim was to reflect about the effects that stir up exclusion and stigma against these people and to promote a space for the construction of new meanings and attitudes.	Sun
<b>Women in Prostitution Situation: the Sense and Meaning of Family and Affection (Portuguese Room)</b> <i>Lucelene Barbin</i> <i>Rosa Macedo</i>	To investigate the sense and meaning of family and affection to women in prostitution situation, their values, beliefs, ideologies, their remembrances and significations of events in their courses of life. We fulfilled a qualitative research, under the new paradigmatic systemic conception, from the perspective of reality construction as theoretic reference.	Sun

<b>Placing Attachment in Cultural Context: Clinical Assessment and Intervention</b> <i>Lin Shi</i>	Based on analyses of desired attachment outcomes in cultural contexts, the presentation will offer a comprehensive clinical assessment of attachment experiences and their influences pertaining to clinical and relational symptoms. The assessment includes four domains which will be illustrated with clinical examples. Important conclusions will be provided.	Arista
<b>Relational family therapy in vocational rehabilitation programme</b> <i>Teja Bandel</i>	Unemployed people with physical disabilities are dealing with a range of abnormalities in different areas of functioning, pre- and comorbid mental disorders as well as considerable family distress. Relational family therapy model is one of the possible treatment for persons with disabilities in order to increase their employability.	Arista
<b>Better Off Dead: Experiences Shared by Co-Parents</b> <i>Matt Morris</i> <i>Dottie Martin</i>	The results of a ethnographic study will be presented in which attendees will hear experiences from 9 Co-Parenting participants navigating the US legal and therapeutic systems. Interviewees share their experiences of court, mandated treatment, and the day-to-day struggle of trying to raise children with a co-parent.	Arista

### 10:15 Presentations (45 Minutes)

	Room
<b>Challenges and opportunities in family therapy training of oncology social workers in Hong Kong: feedback of the</b> <i>Joyce Lai Chong Ma</i> <i>Monica Lai Tuen Yau-Ng</i>	Fania 4
<b>From Isolation to Connection: A case study of a Transgender individuals struggle with identity.</b> <i>Amy Miller</i>	Fani 5
<b>The Impact of Sports Injuries on the Family System- A Research Report</b> <i>Alexander Ochoa</i>	Fania 6
<b>The impact of war on refugee youth and families: Implications for practitioners</b> <i>Hugo Kamya</i>	Verve
<b>Brief Family Therapy in Hospital (Portuguese Room)</b> <i>Mathilde Neder</i>	Sun
<b>Cross-cultural research: The process of measuring family therapy concepts across cultures</b> <i>Tatiana Glebova</i> <i>Marcia Michaels</i>	Arista
<b>Family and couples therapy across continents: how does it work?</b> <i>Reenee Singh</i>	Island

### 11:00-11:15 Refreshment Break

### 11:15-12:45 Plenary Session

	Room
<b>Wired for Love: A Psychobiological Approach to Couples</b> <i>Stan Tatkin, PsyD</i>	Fania 1

### 12:45-14:00 Lunch Break

### 13:30-14:30 Poster Session

<b>Pre-Adolescents' Perspectives of Communication Patterns with Adults about Social Networking</b> <i>Anna Basov</i> <i>Mudita Rastogi</i>	This phenomenological study examined 17 pre-adolescents' behavior and communication with parents about their social media use. Findings highlight participants' internet use, their reports of parental behaviors, and reasons pre-adolescents do not disclose to their parents. The data will help various stakeholders address social media use for pre-adolescents.
<b>Scientific production in the field of psychology in MEDLINE 2000-2010</b> <i>Mohammad-Hosseini</i> <i>Biglu</i>	This study visualizes the position of Iranian scientific output in the field of psychology distributed in 19 top psychological journals. Evaluation of journals ranking was based on the impact Factors and number of citations in the database of JCR.
<b>Authenticity in Relationship Scale: Adaptation and Validation to the Portuguese Population</b> <i>Tania Gouveia</i>	This study tests the validity and reliability of the Portuguese version of the Authenticity in Relationship Scale (Lopez & Rice, 2006). The factor analysis confirmed the original structure, with adequate fit and reliability indexes. The validation process reveals metric properties for the Portuguese version, similar to the original version.



**Hmong mental health needs assessment: A community-based study in Northern California**

*Elise Cole*

Low utilization of mental health services in the United States occurs in several underserved populations, including the Hmong. The purpose of this study was to gain a better understanding of the mental health needs of a Hmong community in Northern California. Results will be reported, followed by a discussion.

**The impact of training in family therapy in personal and family life of students**

*Ana Lucia Horta*

This study show the impact of training in family therapy in personal lives and familii for students who course in the specialization in Intervention and practice with systemic family - family therapy and couple is developed in the Federal University of Sao Paulo, Brazil

**Attachment to father and mother influence on romantic attachment: the mediating role of authenticity in**

*Tania Gouveia*

Assuming the origins of romantic attachment in previous parental relationships, the present study aimed to understand the effects of parental attachment in romantic attachment throughout the possible mediating role of authenticity in relationships.

**Russian translation of the Relational Ethics Scale and its validation**

*Tatiana Glebova*

The purpose of this study was a translation into Russian and its validation of the Relational Ethics Scale (RES; Hargrave, Jennings, & Anderson, 1991), an instrument developed for measuring the constructs of relational ethics as described in contextual family therapy (Boszormenyi-Nagy & Krasner, 1986).

**Results of piloting home systemic intervention to improve the quality of life of the elderly.**

*Perez Sanchez Lucia*

The evaluation of a pilot-controlled trial of a home systemic family therapy intervention to improve quality of life of an old patient with diabetes. The intervention took place at the family's home, lasting ten sessions of treatment and three follow up sessions.

**Cheating, Breakup, and Divorce: Is Facebook Use to Blame?**

*Jessica Smith*

Does Facebook ruin interpersonal relationships? Research has discovered that a high level of Facebook usage, when mediated by Facebook-related conflict, is associated with negative relationship outcomes such as breakup/divorce, emotional cheating, and physical cheating. However, this is only true for newer relationships of 3 years or less.

**Social Exchange and Behavioral Marital Therapy: Teaching Couples How to Utilize Facebook**

*Jessica Smith*

This poster focuses on research regarding the positive and negative effects of Facebook on romantic relationships. Then, Social exchange theory and behavioral marital therapy provide a framework for describing couples' Facebook utilization and are further reviewed as potential therapeutic conceptual tools for couples' on-line relational activity.

**Couple Relationship Dynamics and Facebook Use**

*Jason Northrup*

*Jessica Smith*

This research aims to understand whether causal relationships exist between a couple's online social networking behavior and relationship factors (satisfaction, commitment, intimacy, etc.). If such relationships exist, professionals can begin identifying problematic online social networking behaviors among couples, and introduce online social networking behaviors that may improve couple dynamics.

**Mothers' Narratives of Trauma**

*Stephen Coulte*

This presentation will report the findings of an exploratory study of how ten mothers narrated the impact of trauma. The Narrative Interviews were subject to thematic analysis. The results call into question an approach that focuses primarily on individual's PTSD-type symptoms and supports a broader systemic approach.

**Identification of Persons at Risk: Responses after Boston Marathon Bombing among the Japanese Individuals in the**

*Misato Nishijima*

This study conducted a survey of Japanese people in the Greater Boston area to identify risk factors that are associated with higher anxiety levels in response to a series of Boston Marathon Bombing incidents.

**Children of the disappeared in the Argentinian dictatorship: reviewing cultural and technology issues**

*Valentina Penalba*

A poster to describe preliminary findings of a pilot study conducted by video and face-to-face interviews with three Argentinian children (now adults) of the disappeared. The aim of this study is to understand the methodological challenges a larger study is likely to encounter.

**Lay Looks Of The Male And Female Genders About Homoparental Family**

*Rosa Maria Stefanini de*

*Macedo*

*Maria Ivone Marchi-Costa*

This base qualitative research aimed to understand how lay people from both genders understands homoparenthood families. Twenty people were involved in the research, living in the midwest of the São Paulo State, in Brazil. It was concluded that both genders revealed concerns about the psychosexual development of the child.

**Homoparenthood: Meaning Attributed To Fathering And Mothering From The Perspective Of Gender**

*Maria Ivone Marchi-Costa*

*Rosa Maria Stefanini de*

*Macedo*

This is a qualitative research, analyzed based on social constructionism. Participants were 20 persons, residents in the western of São Paulo, Brazil. It was revealed that the majority believes that homoparenthood can be exercised by both genders, confirming studies that claim that the fathering and mothering are socially developed.

**Elderly And Homoparental Family: Meanings Assigned**

*Rosa Maria Stefanini de*

*Macedo*

*Maria Ivone Marchi-Costa*

This is a study that aimed to understand what were the meanings attributed to gay families and the elderly was conducted by a dialogical interview with 10 people of both sexes. The results showed that both genders revealed prejudices grounded in the model of families heteroparental.

**Preliminary results of a weight and body awareness curriculum for Couple and Family Therapists**

*Elizabeth Palmer*

This study explores Couple and Family Therapists' views on weight and body awareness curriculum and presents preliminary results of student-therapists' self-reported weight-bias towards overweight clients. Results are further analyzed for differences in participants reported weight-bias based on selected demographic variables and self-reported weight status.

- Impact of Pets in the Quality of Life and the Attachment Patterns of Puerto Rican Family Members**  
*Stephen Gonzalez* The purpose of this study is to further explore the effect of pets in the family, how the internal models of attachment influence and if this somehow reflected in a better quality of life in families.
- Technology in Families and the Clinical Encounter: A Replication Study with Family Clinicians in Turkey.**  
*Yudum Akyil*  
*Gonzalo Bacigalupe* This is a replication of a cross-cultural study investigating family clinicians' beliefs about the impact of emerging technologies on families and on their clinical practice. The Turkish version of the original survey was administered to family clinicians. A cross-cultural comparison and implications for practice will be discussed.
- (De) Constructing Child-to-Parent Violence – Family Therapeutic Intervention in Child-to-Parent Violence, featuring an Adolescent in Residential Care**  
*Neusa Patuleia*  
*Isabel Alberto* The process of family therapeutic intervention in a CPV case, featuring an adolescent in the context of residential care, held in monthly cotherapy sessions (10 sessions + 2 follow-up), focusing on 3 dysfunctional family areas: hierarchy; protection/secret; separation/fusion.
- The Impact of Pets on the Family System**  
*Aida L. Jiménez* This research is exploratory and qualitative, focusing on how childhood experiences and relationships with parents influence the decision of having, or not having, pets, the perception towards pets, and its impact on the family system. Our results show that different attachment patterns provided participants with specific parenting skills.
- Strengths of Never-Married Single Parents: Does Gender Matter**  
*Candice Maier* This study examined how perceptions of single mothers and fathers varied by gender. Qualitative responses were gathered from 873 participants. The results suggested that participants' positive perceptions of single parents appeared to be more strongly influenced by gender than single parent status. These findings suggest important implications for family therapists.
- Does parental conflict develop children's social anxiety in their adolescence or young adulthood?**  
*Seongjun Kim*  
*Alexander Ochoa* Childhood trauma can cause many problems such as social anxiety. This trauma may be caused by incidents in familial environments, such as conflicts between parents. This session will explore that parental conflicts develop social anxiety of the child and the child's emotional process to develop later social anxiety.
- Do Smartphone and Tablet Computer impact Children's Mental Health?: Five Nation's Comparison.**  
*Asmaa Alotaiby*  
*Valentina Penalba*  
*Seongjun Kim*  
*Brittany Robinson* This presentation will provide the assessment of children's smartphone or tablet computer addiction degree by comparing the five nations such as Brazil, the USA, Saudi Arabia, Argentina, and South Korea. Participants will discuss the cultural differences and issues of children and family dynamics about using smartphone or tablet computer.
- Issues in Access to Information in an Emergency Situation: Needs Among Japanese Individuals in the Greater Boston area after Boston Marathon Bombing**  
*Naomi Yokoyama* We conducted a survey of Japanese people in the Greater Boston area to investigate which information sources and needs in emergency situations.
- Mom and Dad Count in Preventive Intervention**  
*Pierrette Verlaan* The study evaluated the added effect of father participation in a parent training program. Results indicated that mothers' parenting improved when fathers participated but deteriorated for mothers who attended alone and for control parents. Results confirm the importance of implicating both parents in prevention programs for disruptive children.
- A two-component instrument to measure fear of intimacy**  
*Maria Sobral* The new Fear of Intimacy Components Questionnaire is a two-factor, ten-item measure whose proposal is to embrace fear of dependence, along with fear of exposure, as a component of fear of intimacy. This study shows FICQ to be a theoretically and psychometrically adequate measure of fear of intimacy.
- Ensuring Student Achievement Utilizing a Cycle of Assessment & One-to-One Mentor Model**  
*Charles West*  
*William Northey* Northcentral University's marriage and family therapy programs utilize an eight step assessment model to monitor and ensure student achievement, while utilizing a one-to-one teaching model. This process ensures that student and program outcomes are aligned with the mission and values of the University and program. Through the use of detailed curriculum mapping and rubrics strategically placed throughout the curriculum data is gathered, aggregated, analyzed, and used to develop clear action plans. Feedback from communities of interest are sought throughout this process to ensure both changes and program content are designed to benefit student growth.
- Marital Satisfaction: a preliminary study describing positive factors.**  
*Antonio Romaguera* This preliminary study attempts to disclose a profile for couples who experience low or high marital satisfaction. Variables that have an impact on marital satisfaction are years together prior to marriage (correlation of .32,  $p < .05$ ) and socio-economic status. Other variables like age and gender were non-significant.

### 14:30 Presentations (45 Minutes)

### Room

- Therapists in a Foreign Land- Challenges, Contributions and Supervision** Fania 4  
*Karni Kissil* In this presentation participants will learn about the possible challenges foreign born therapists face when working in a foreign land and about the unique contributions they bring to their work. Participants will also learn how supervisors can help foreign born therapists develop clinical self-efficacy and achieve better therapeutic outcomes.
- The Impact of Demographic Categorizations on Middle Easterners: A Critical Theory Analysis** Fania 5  
*Sarah Samman*  
*Allison Parker* This presentation will review the impact of the categorization of biopsychosociospiritual demographics commonly acquired from intake forms on the therapeutic relationship through a critical theory analysis. We wish to highlight the impact of the lack of distinction for Middle Easterners and that commonly minimize the experiences of this population.

<b>The Gottman-Johnson Summit: Was someone supposed to win</b> <i>Jeffrey White</i>	Gottman Method Couples Therapy and Emotion Focused Couples Therapy are popular methods for providing couples therapy. Typically, competing approaches in specialized areas seek to differentiate themselves from one another. In this presentation, you will learn why these scholars chose to come together recently and explore their differences and similarities.	Fania 6
<b>Tapping Into the Unconscious Through Body Exploration-When Verbal Psychotherapy Isn't Enough</b> <i>Annette BoVee-Akyurek</i>	Explore intention of inner exploration, tapping into innate nature and internal knowing. Often clients become immobile in their therapy process with great cognitive understanding, yet minimal change. By exploring inside, often the unconscious surfaces and the intuitive part of ourselves provides us with input that may promote healing.	Verve
<b>You want to bring who? Utilizing Family Strengths to Enhance Substance Abuse Treatment</b> <i>William Northey</i>	This interactive session will focus on ways that families can be engaged in substance abuse treatment, which can range from providing information to families to utilizing interventions shown to decrease the problematic use of substances. Opportunities for case consultation and a discussion of challenges when engaging families will be included.	Sun
<b>The Impact of Technology on Relational Aggression with Minorities</b> <i>Shannon Zorn</i> <i>Adriana Casso</i>	Relational aggression, also known as bullying, has been given a lot of attention in the last few years. However, the impact of cyberbullying has been overlooked. Therefore, this workshop will explore this phenomenon from a uniquely systemic lens while focusing on its occurrence within ethnic minority populations.	Arista
<b>#OneWorldPeaceDay: An Experiential &amp; Systemic Approach to Working with Families and Teens Through the Use of</b> <i>Sylvia Kalicinski</i>	#OneWorldPeaceDay: An Experiential & Systemic Approach to Working with Families and Teens Through the Use of Yoga, Meditation, Music, and Social Media.	Island
<b>15:30 Presentations (45 Minutes)</b>		<b>Room</b>
<b>The Fourth Dimension: 4-D Communication with Adolescents</b> <i>William "Wally" Scott</i>	The therapeutic relationship with adolescents has been referred to as the 'fragile alliance.' Communicating effectively with adolescents poses challenges to the most seasoned therapists. Assessing and properly utilizing Distance, Direction, Development, and Dialogue will provide a frame for understanding and guiding more effective communication with today's youth.	Fania 4
<b>Demographic Shifts in Puerto Rico: Implications for Family Therapists</b> <i>Anibal Torres Bernal</i>	Puerto Rico is experiencing unprecedented demographic changes. For the first time in history its population is shrinking. These demographic trends have the potential to impact both communal and familial life. The presenter will highlight the significance of these changes and how family therapists can aid families in navigating these changes.	Fania 5
<b>Collaborative Diagnostic</b> <i>Rosa Maria Macedo</i>	The aim of this paper is to present a collaborative construction of the signification of the psychological mental problem clinical clients shows as an alternative to the psychiatric diagnostic based in the DSM classification which frequently creates an stigma and/or a prejudice against people clinicians need to care.	Fania 6
<b>An Integrative, Interactional Approach to Psychotherapy: Going Beyond Narrative Therapy</b> <i>Warwick Phipps</i>	That narrative therapy, a leading development, has returned to an earlier phase—the intrapsychic perspective—suggests that family therapy is in a cul-de-sac. In going beyond narrative therapy, an integrative, interactional approach integrates a systems/interactional approach with the communication theory and humanistic approaches.	Verve
<b>21st century family therapy: Adolescent treatment using modern technology</b> <i>Dalesa Scott</i>	Adolescent development has changed significantly since the 20th century. With the addition of technological advances such as social media, cyber bullying, etc., presenting problems in therapy with adolescents have expanded tremendously. This workshop will explore ways in which clinicians can understand and utilize modern technology to treat adolescent families.	Sun
<b>Couple and Family Based Treatment of Internet and Video Game Addicts</b> <i>Jason Northrup</i>	While plenty of research on internet and video game addicts exists, little has been written about the experiences of the spouses of these addicts. This workshop focuses on qualitative research describing the experience of spouses of video game addicts while also proposing treatment models based in outcome research for alcoholism.	Arista
<b>Coaching Parents to Build Better Communication and Collaboration with their Children's Schools</b> <i>Pamela Harris</i> <i>Rebecca Sheffield</i> <i>Sharon Kim</i>	This session explores the reluctance of some parents to communicate with their children's teachers and school counselors. The presenters (which include a school and family counselor) will introduce strategies that family counselors can use to ease parents' anxieties, as well as tips for improving communication with school systems.	Island
<b>16:15-16:45 Refreshment Break</b>		
<b>16:45 Presentations (45 Minutes)</b>		<b>Room</b>
<b>Stress, Wellness and Chronic Disease: Using Innovative Health Care Technology to Effectively Support Families</b> <i>Sheila Daley</i>	Stress increasingly erodes health and relationships, adversely impacting families. Each year in the US	Fania 4
<b>Improving clinical outcomes through the use of a clinical feed-back system (FFT-CSS).</b> <i>Dagfinn Mørkrid</i> <i>Thøgersen</i> <i>Michael Robbins</i>	A clinical feed-back system developed for an evidence-based treatment (FFT-CSS) will be presented. A case example from Norway will describe the use of the system over a five year period to increase therapist competency, model fidelity and clinical outcomes.	Fania 5
<b>Survival Stories and HIV + Women: A Technique to Break the Cycle of Partner Abuse</b> <i>Emmerentie Oliphant</i> <i>Kathleen Belanger</i>	The use of survival stories is a method to reconnect women with their positive skills from the past. Case studies of the use of survival stories with HIV+ women of color will be shared. The methodology, protocol and ethical considerations in using this technique will be explained.	Fania 6



<b>Looking at Couple Intimacy in a Developmental Way- A Hypothetical Model</b> <i>Seongjun Kim</i> <i>Alexander Ochoa</i>	This presentation explores intimacy development between individuals by expanding on current literature and introducing a new hypothetical model of intimacy. The presenters will focus on the disclosure that occurs throughout a couple's relationship that contributes to the developmental processes of intimacy and the individual factors that contribute in disclosure.	Verve
<b>Relational Formation in the Classroom: Preparing the Person of the Therapist</b> <i>Janet Stauffer</i>	This interactive workshop engages participants in discerning educational practices that are formative for the person of the therapist which studies indicate is the core of the therapeutic relationship. An educational paradigm rooted in Contextual theory and it's perspective on the development of the interhuman will be presented.	Sun
<b>Sexuality Therapy: An Overview</b> <i>John Southern</i> <i>Fangzhou Yu</i>	This program will present an overview of sexuality therapy approaches associated with cases presenting dissatisfaction, dysfunction, or disorder. We will review biopsychosocial, feminist "new view", and intimacy enhancement methods. An integrative case conceptualization and treatment planning model will be presented. We will describe sexuality therapy in China and the USA.	Arista
<b>Uncovering Family Narratives of Spirituality</b> <i>Suzanne Coyle</i>	Families are challenged by a growing societal emphasis upon immediate gratification. This presentation focuses upon postmodern therapeutic practices that lift up a family's narratives of spirituality. By telling their narratives of meaning, a family can then develop resilience to the cultural discourse of the 'quick fix.'	Island

### 17:45 Presentations (60 Minutes)

		Room
<b>A Social Media Primer for Family Therapists: Navigating Rapid Technological Waters</b> <i>Gonzalo Bacigalupe</i>	Our professional digital footprints are part of our identity as well as of the families we engage with. Social media tools enable and expand our ability to work systemically and it is a must to integrate them effectively in our work.	Fania 4
<b>Mothers &amp; Fathers with HIV: Complexity of family disclosure-related decisions in the cultural milieu</b> <i>Victoria Foster</i> <i>Rip McAdams</i> <i>Richelle Joe</i> <i>Derek Robertson</i>	Mothers and fathers with HIV face complex sets of family and childrearing decisions. Low rates of disclosure among families narrate the complexity of disclosure-related decisions embedded in the family and cultural milieu. Disclosure processes within families is explored through feminist & multicultural family therapy lenses, including narratives from clients.	Fania 5
<b>The Ethical Use of Social Media in #MarriageandFamilyTherapy: Suggested Guidelines</b> <i>Rebecca Cobb</i> <i>Ebony Okafor</i> <i>Ethan Schwab</i> <i>Jenna Scott</i>	MFTs face a number of ethical dilemmas when using social networking sites. Challenges faced by using Facebook, Twitter, and other mediums will be reviewed and discussed in relation to AAMFT's code of ethics. Suggested guidelines and a demonstration of changing privacy settings on popular networking sites will be presented.	Fania 6
<b>Resolving conflicts in the family as a way to reach more harmony in our community-Satir Transformational Systemic</b> <i>Sibel Erenel</i>	Peace starts at home. Satir Transformational Systemic Therapy Model (STST) offers a unique process towards bringing such peace: "peace within, peace between, Peace among". In this workshop we will experientially present the Iceberg Metaphor as a vehicle to resolve conflicts in the family, encouraging accepting people differences towards growth.	Sun
<b>Trauma And It's Transmission - Second Generation Holocaust Survivor Men - In Eft Couple Therapy</b> <i>Judith Kellner</i>	Deonmstate how past trauma emerges in second generation men, how it manifests itself in couplehood. Via the EFT model show how to stay with man's emotions once the vulnerability is touched. The goal is to liberate these second generation men to pursue their own voices in intimate relationships.	Arista
<b>Family Therapist Training Panel</b> <i>William Hiebert</i> <i>Bill Nichols</i> <i>Fatma Reid</i> <i>Lee Bowen</i>	This panel will explore the many ways various countries have developed training programs and the kind of guidelines that exist for developing training programs. The panelist are individuals who have been involved in training over the years on the master level, doctoral level and in post-degree training. The panelists include: Fatma Reid, Moderator and IFTA Past President; Lee Bowen, IFTA President; William Nichols, Former IFTA President; and William Hiebert, IFTA General Secretary.	Island

### Saturday, March 8th

#### 9:00 Presentations (60 Minutes)

		Room
<b>One Foot In One Foot Out–Our Evolution As Therapist When Self And Main Culture Not In Congruity</b> <i>Judith Kellner</i> <i>Eda Arduman</i> <i>Martine Nisee</i>	Judith, (Now) US- Impact of multiple immigrations and legacy of war trauma. Eda, Turkey- Identity in transit - constructing an identity as a psychoanalyst and a systemic family therapist; construct the self as an agent of change. Martine, France-Embedded in culture born into; curiosity created change within own culture.	Fania 4
<b>Incorporating Expressive and Projective Interventions into Family Therapy</b> <i>Daniel Sweeney</i> <i>Richard Shaw</i>	Many challenges in family therapy may not respond to traditional verbal interventions. The creative nature of projective and expressive interventions – such as sandtray, art, and drama therapy – provide a safe and nonverbal avenue for family members to process presenting crises. This workshop will explore these exciting and active therapeutic techniques.	Fania 5
<b>A Psychohistory Course for MFT Students: Macrosystemic Dynamics and the Problem of Evil</b> <i>Kristina Blake</i>	This presentation describes an innovative course for doctoral students in MFT that seeks to augment their training in cultural competency by exploring the meanings that underlie the social construction of culture and the often times disruptive and violent sociohistorical contexts within which such constructions have evolved in the modern era.	Fania 6

<b>Healing in a Digital World</b> <i>Yajaira S. Curiel</i> <i>Kenneth V. Hardy</i>	This interactive workshop will explore various digital strategies to promote healing in the clinical setting. Using case histories and demonstrations, we'll explore the "Strategies" that work best for different types of clients. Participants will gain practical ideas for incorporating technology in the healing process and increasing clinical effectiveness.	Verve
<b>The Migration of Evidence Based Practice</b> <i>William Northey</i> <i>Rodolfo Justine</i> <i>Carlos Leiro</i> <i>Lilia Urrutia</i>	In this interactive session the presenters will address the opportunities and challenges presented when implementing evidence-based practices in different countries and contexts from where the models were originally developed. Advantages and disadvantages of using evidence-based models will be explored.	Sun
<b>Generations of Violence: Technology in Intimate Partner Violence across the lifespan</b> <i>Dalesa Scott</i> <i>Racine Henry</i> <i>Candice Cooper</i>	Intimate Partner Violence (IPV) is a prevalent issue that impacts families across the globe. With constant new advances, it is vital for clinicians to understand the role of technology in intimate relationships. This workshop will explore the influence of technology on violence in intimate relationships throughout the lifespan.	Arista
<b>The Matrix Model; Evidence based treatment for individuals with chemical dependence and co-occurring disorders</b> <i>Katheryn Whittaker</i> <i>Khadijah Bhutto-Ramirez</i>	The Matrix Model is a proven, evidence-based treatment for individuals with chemical dependence (Huber, 1997; Rawson, 2004). The presenters will identify basic principles of addiction, incorporating a history, research and overview of the Matrix Model. Attendees will interactively learn aspects of this group-treatment strategy for clinical practice.	Island

**10:15 Presentations (45 Minutes)**

<b>Systemic Approach applied to executive coaching</b> <i>Jacqueline Tome</i>	This workshop is designed for professionals interested in expanding their practice to the corporate world. Learn the differences and similarities between a family therapist, a coach and a consultant and how to use the expertise you have to broaden your professional area.	<b>Room</b> Fania 4
<b>Equipping Counselors to Assess Clients' Financial Health</b> <i>Matt Morris</i>	We know financial distress often leads to relational distress, but as therapists how do we assess financial health, and make basic recommendations to our clients? This session presents the collaborative work of a family therapist and financial advisor providing attendees a simple framework for assessing client financial health.	Fania 5
<b>Believable Hope: 5 Essentials Elements to Beat Any Addiction</b> <i>Michael Cartwright</i>	This presentation introduces and describes the five essential elements to beat any addiction. Personal accounts and evidence-based practices are integrated to further demonstrate each element. Specific techniques which can be utilized to augment clients' motivation to change and probability of recovery will also be addressed.	Fania 6
<b>Between a Rock and a Hard Place- Being an Orthodox Jew and Gay: What Can Family Therapists Do?</b> <i>Karni Kissil</i> <i>Haya Itzhaky</i>	In this presentation, through lecture and case vignettes, participants will learn about the daily struggles Orthodox Jewish gay men face trying to reconcile their religious and sexual identities. Participants will also learn about the ways family therapists can intervene with this population at the individual, family, community and policy levels.	Verve
<b>Plugging in to Reconnect: Increasing Family Cohesion Through Technological Interventions</b> <i>Alexander Ochoa</i>	As technology continues to advance, therapists may find it difficult to help families connect in traditional ways. This presentation is to provide therapists with technological interventions to help parents and children reconnect outside of sessions. Results from a study conducted in St Louis will be presented.	Sun
<b>Believable Hope for the Family</b> <i>Wayne Raiter</i>	This will be a presentation of a new family treatment program in an Inpatient (Compulsive behavior and mental health patients) setting. Inclusive in the presentation will be new techniques for the use of online work with families.	Arista
<b>MFT bilingual/bicultural competence &amp; Mexican Client Perspectives on Therapy with Spanish as Second Language</b> <i>Jason Platt</i>	As many members of minority language communities struggle in connecting with competent mental health providers with language being a significant barrier, this presentation explores how being a Spanish as a Second Language (SSL) clinician may have an influence on clinical work with native Spanish language speakers in an international context.	Island

**11:00-11:15 Refreshment Break**

**11:15-12:45 Plenary Session**

<b>Systemic Therapy with Families and Children Working in the Streets in Ecuador and Mexico</b> <i>Janine Roberts, PhD</i> <i>Merli Lopez Rodriguez</i>	JUCONI, Ecuador is an organizaion that provides family therapy (among other services) to street working children and their families to get the children off the street and back in school. The leader of JUCONI's clinical teams, Merli Lopez, and Janine Roberts (who has trained the therapists at JUCONI for more than a decade) will present both the JUCONI therapeutic model and work done in family homes and communities, as well as describe key processes to enter organizations and do trainings especially when working in another language and culture.	<b>Room</b> Fania 1
---	--	------------------------

**12:45-14:00 Lunch Break**

**14:00 Presentations (60 Minutes)**

<b>(Students Only) MFT Student Meeting: What is happening in MFT programs around the world and meet other MFT</b> <i>Victoria Foster</i> <i>John Lawless</i>		<b>Room</b> Fania 5
--	--	------------------------

<b>The Double Gain of Parental Empowerment: A Five-Session Child-Focused Family Therapy Model</b> <i>Fatma Reid</i>	The workshop will explore how the first and the last sessions reinforce collaboration with the couple as parents and how IOSB (insight-oriented skill building) is introduced to the parents. The second through fourth sessions are used for assessment and play therapy with the child.	Fania 6
<b>Intervention with families living in poverty: Therapeutic issues and approaches</b> <i>Sid Frankel</i>	A critical analysis of the multi-disciplinary literature on the effects and correlates of family is presented, focusing on translating them into issues which should be incorporated into family intervention. Critiques of family therapy with poor families are reviewed. Therapeutic approaches designed for poor families are described and analyzed.	Verve
<b>Culture, Diversity, and Bowen Family Systems Theory, Part 1</b> <i>Christopher Burnett</i> <i>Jill Morris</i> <i>Terri Neipert</i>	The work of Bowen provides a unique lens for understanding the ideas of culture and diversity. Using the concept of Differentiation of Self, the presenters look at how culture and diversity can be seen in ways that open up entirely new vistas for dialog and understanding.	Sun
<b>Getting to know the DSM-5; Education and training of therapists and supervisors on the new changes in diagnosis,</b> <i>Katheryn Whittaker</i>	Diagnosing individuals with mental health and substance challenges concerns clinicians, educators, and supervisors. May 17, 2013, the American Psychiatric Association released the DSM-5. Participants will receive interactive knowledge on diagnosis and changes. They'll also participate in administering new assessment instruments for use in clinical practice.	Arista
<b>Innovative Interventions for Families of Street-involved Children (Spanish Room)</b> <i>Janine Roberts</i> <i>Merli López Rodríguez</i>	A range of therapy techniques used in the homes of JUCONI families in Ecuador/Mexico such as street plans of where the children are working, paper bag puppets and other expressive arts, rituals to address trauma and loss, life & time lines, family floor plans/sculpting will be presented.	Island
<b>15:15 Presentations (60 Minutes)</b>		<b>Room</b>
<b>On connecting cross-culturally: Lessons learned from immigrant CFTs in the U.S.</b> <i>Alba Nino</i>	In this workshop, participants will learn about strategies that immigrant CFTs in the U.S. have developed to establish and maintain strong therapeutic connections when working cross-culturally with clients. Through an experiential exercise, participants will also reflect on how they can apply these strategies in their clinical practice.	Fania 4
<b>Perceptions of the First Family Counseling Session: Why Families Come Back</b> <i>Rip McAdams</i> <i>Victoria Foster</i>	This presentation will report on a study that examined client perceptions of their initial family counseling session. Quantitative and qualitative analyses confirmed that multiple conditions exist within the context of the initial family counseling session that are instrumental in the families' decisions to return.	Fania 5
<b>Technological Ambiguity of Confidentiality for Family Therapists around the World</b> <i>Daniel Stillwell</i> <i>Valentina Penalba</i> <i>Seongjun Kim</i>	MFTs from different countries will assist an international audience on navigating confidentiality ambiguities around electronic therapy, phone calls, texting, email, Facebook, Twitter, Skype, and being searchable online. Attendees will have an opportunity to share their own experiences.	Fania 6
<b>Multicultural Perspectives on Family Therapy Training and Supervision: A three continents journey</b> <i>Isha Williams</i>	Cultural perspectives of family therapy training and supervision will be discussed from different cultural contexts. The presenters bring the following perspectives: an American instructor teaching Romanian and US FT students; a Romanian instructor teaching South African and Romanian FT students; and a Romanian instructor teaching American and Romanian FT students.	Verve
<b>Culture, Diversity, and Bowen Family Systems Theory, Part 2</b> <i>Christopher Burnett</i> <i>Jill Morris</i> <i>Terri Neipert</i>	This presentation will demonstrate how understanding the concepts of Culture and Diversity using a Bowen Family Systems framework allow therapists to open up an entirely new vista for approaching such issues clinically, while avoiding many of the common problems associated with these issues. Specific examples are discussed.	Sun
<b>Continuing Conscious Competence</b> <i>Charles West</i> <i>Lois Paff Bergen</i>	Presenters will introduce the concept of conscious competence and the role it plays in therapists' self-awareness and establishing goals regarding maintaining and growing essential skills, knowledge, attitudes, and judgments. Audience members will be invited to contribute from their own experiences regarding conscious competence.	Arista
<b>Part II: Innovative Interventions for Families of Street-involved Children</b> <i>Merli López Rodríguez</i> <i>Janine Roberts</i>	A range of therapy techniques used in the homes of JUCONI families in Ecuador/Mexico such as street plans of where the children are working, paper bag puppets and other expressive arts, rituals to address trauma and loss, life time lines, & family floor plans/sculpting will be presented.	Island

**16:15-16:45 Congress Closing**

**16:45-17:15 Closing Refreshment Break**

**17:15 Congress Finished**



---

# IFTA Leaders

---

Meet International's Family Therapy Association's distinguished Board of Directors and Officers who are leaders in the family therapy field in their respective countries and recognized around the world.

---

## IFTA Officers

---



**Lee Bowen**  
**President**

PhD, USA  
(2013-2015)



**Ruth Casabianca**  
**President-Elect**

PhD, Aregentina  
(2013-2015)



**Fatma Torun Reid**  
**Past President**

MS, Turkey  
(2013-2015)



**David W. McGill**  
**Recording Secretary**

PhD, USA  
(2011-2014)



**Sibel Erenel**  
**Treasurer**

MSW  
(2013-2016)

---

## Directors at Large

---

**2011-2014** Term ends June 30, 2014

Warwick Phipps, PhD, South Africa  
Anna Low, MSocSc, Singapore  
Joyce Ma, PhD, Hong Kong

**2012-2015** Term ends June 30, 2015

Lia Fernandez, MD, Portugal  
Judith Kellner, PhD, USA  
Roxana Zevallos, Lic., Peru

**2012-2015** Term ends June 30, 2015

John Lawless, PhD, MPH, USA  
Kathlyne Maki-Banmen, MSW, Canada  
Martine Nisse, MS, France

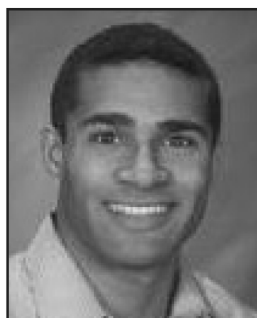
---

## Secretariat

---

**Journal of Family Psychotherapy Editor:**  
Terry Trepper

**Research E-Forum Newsletter Editor:**  
Katherine Hertlein



**Fred Jefferson**  
Congress CFO,  
Membership Director



**Doug Tschopp**  
Event Manager



**William Hiebert**  
General Secretary

### Congress Registration Desk Staff



**Heather  
Ohde**



**Amber  
Dalgaard**

# IFTA's XXIII World Family Therapy Congress Kuala Lumpur, Malaysia March 11-14, 2015



The 23rd World Family Therapy Congress will be held 10 - 14 March 2015 in Kuala Lumpur, Malaysia. We invite you to join colleagues from around the world at the Congress Hotel, the JW Marriott, a five-star hotel in the heart of Kuala Lumpur.

The 2015 Congress has as its theme, Changing Traditions and Systemic Therapy: Dangers and Opportunities for Families. The Congress will focus on how generational, cultural, religious, and political changes impact families, and, as a result, families can respond to these changes as opportunities for growth. The 2015 Congress will feature many approaches to a variety of problems and ways of coping with them. The congress aims to help heal hurting couples and families in various cultures.

The International Family Therapy Association was an outgrowth of the East-West Bridging Congress conducted in Prague in 1987. Since that time, IFTA's goal has been the same: Advancing family therapy worldwide by promoting research, education, and sound practice while promoting international cooperation and the exchange of knowledge and ideas that support the health and well-being of families and persons around the world.

2015 World Family Therapy Congress

**CALL FOR  
PROPOSALS**

Open **April 1, 2014** until **August 31, 2014**  
Plan NOW to present at next year's Congress



NORTHCENTRAL UNIVERSITY

# MARRIAGE AND FAMILY THERAPY AT A HIGHER DEGREE

## THE INDIVIDUALIZED FEEDBACK YOU NEED TO SUCCEED

Our One-to-One faculty mentored approach (one student paired with one faculty member) means your classroom size is one. You'll be personally educated by highly-credentialed faculty, who are practicing marriage and family therapist and/or supervisors.

- ✓ REGIONALLY ACCREDITED
- ✓ ONLINE CONTENT COURSES
- ✓ NO PHYSICAL RESIDENCY
- ✓ LOCAL CLINICAL TRAINING



NCU's Master of Arts in Marriage and Family Therapy is the first distance-based COAMFTE-accredited program – ensuring that the University's program aligns with national accreditation standards.



“We are blazing a new trail in MFT education...online.”

*Branden Henline, PhD  
Dean, School of Marriage and Family Sciences*

Northcentral's School of Marriage and Family Sciences offers MA and PhD programs in Marriage and Family Therapy in a predominantly online format. Our MA program focuses on foundational training to prepare students for MFT licensure in most states. The PhD program offers advanced training with specialization options that focus on working with Children and Adolescents, Couples, or Military Families. Ultimately, our programs are designed to help you acquire the knowledge, practical application and values that will shape you into a competent, ethical and culturally sensitive marriage and family therapist.



# NCU

Northcentral University

Northcentral University delivers professionally relevant, online Master's and Doctoral degree programs in **Marriage and Family Therapy**.

**FOR MORE INFORMATION VISIT [NCU.EDU/IFTA](http://NCU.EDU/IFTA) OR CALL 855.346.7382**

For program disclosures, visit: <http://www.ncu.edu/ge>

Northcentral University is regionally accredited by the Higher Learning Commission of the North Central Association of Colleges and Schools (HLC) 230 South LaSalle Street, Suite 7-500, Chicago, IL 60604, 1.800.621.7440, [www.ncahlc.org](http://www.ncahlc.org)

Northcentral University's Master of Arts in Marriage and Family Therapy Program at Northcentral University is accredited by the Commission on Accreditation for Marriage and Family Therapy Education of the American Association for Marriage and Family Therapy, 112 South Alfred Street, Alexandria, Virginia 22314, Tel. No. (703) 838-9808.